

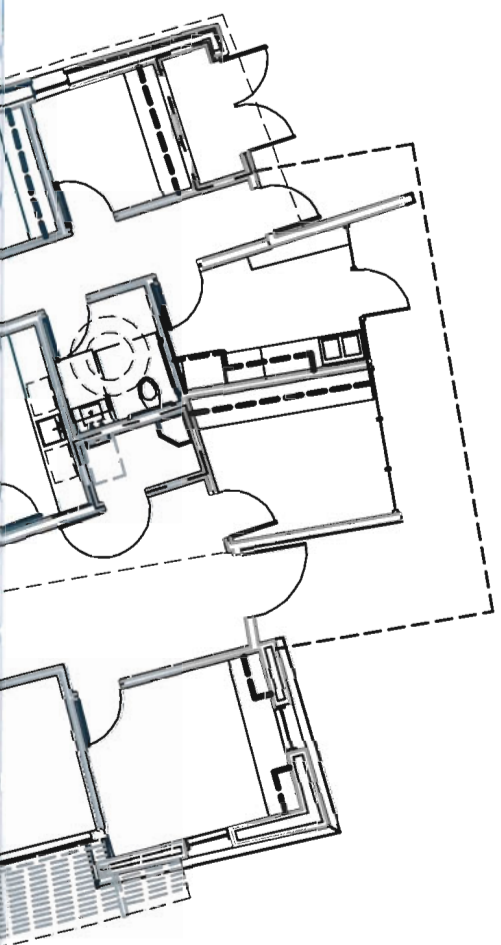
ARCHITECTURE FOR

HEALTHCARE



Edited by Andrea Boekel

images
Publishing



Santa Ysabel Community Center
Santa Ysabel, California, USA
HMC Architects

- 1 Located on the Santa Ysabel Reservation, the center combines Native-American history, ancient culture, high design, and spirituality with state-of-the-art technology. To strengthen the link with the natural environment, an oak tree behind the facility is structurally represented in the lobby.
- 2 The floor plan is organized into related functional areas that promote a natural flow of circulation

Photography: Jim Brady

Renown Health South Meadows Diagnostic and Treatment Pavilion
Reno, Nevada, USA
HMC Architects

- 3 Regional characteristics were borrowed to create this dramatic exterior
- 4 The east elevation of the building features the emergency entrance on the right and the stair tower in the center

Photography: Vance Fox



3



4



1

**McKay-Dee Hospital Center
Ogden, Utah, USA**

HKS Architects, Inc.

- 1 Expansive daylighting, mountain views, and the warm texture of the floor counteract the high-tech feel of the intensive care unit

Photography: Blake Marvin

**Renown Health South Meadows
Diagnostic and Treatment Pavilion
Reno, Nevada, USA**

HMC Architects

- 2 Surgery recovery beds
- 3 Operating room
- 4 CT Scanner Control Room; looking into the machine

Photography: Vance Fox



4