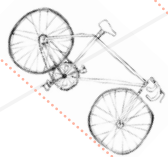


No.



**CYCLING
DENMARK'S
NATIONAL ROUTE**

CONTENTS

- 1 PROPOSAL
- 2 PURPOSE
- 3 PLACES

- 4 ITINERARY
- 5 COSTS
- 6 DOCUMENTATION

- 7 FINAL WORDS

The bicycle is the most civilized conveyance known to man. Other forms of transport grow daily more nightmarish. Only the bicycle remains pure in heart.

Iris Murdoch
The Red and the Green

Life is like riding a bicycle - in order to keep your balance, you must keep moving.

Albert Einstein

1 PROPOSAL

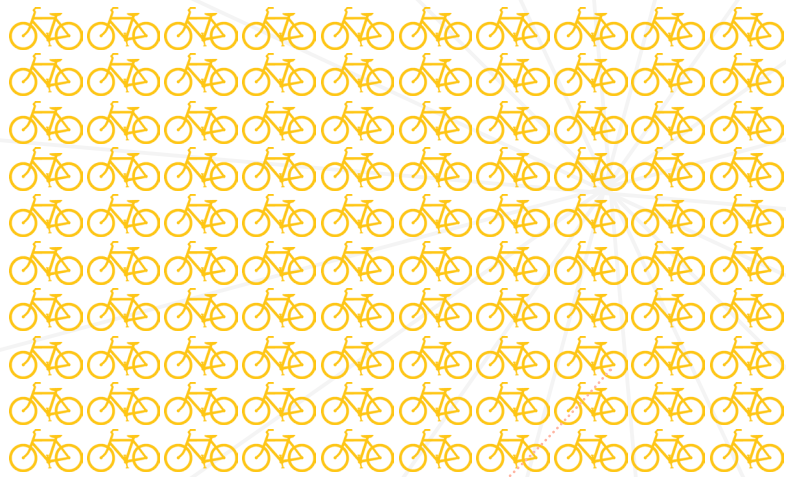
2 PLACES

3 ITINERARY

4 COSTS

5 DOCUMENTATION

6 FINAL WORDS



=



Approximately 100 bicycles can be built with the resources required to build one car.

1 PROPOSAL

2 PLACES

3 ITINERARY

4 COSTS

5 DOCUMENTATION

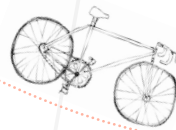
6 FINAL WORDS

One of my favorite

childhood memories is the exhilaration of riding with my dad on his bicycle. It was common to ride our bicycle to the local market, to school, the bathhouse, as well as leisurely weekend excursions to the playground. For my sister and I, a ride in the backseat was worth competing for. I vaguely remember the places we rode by, but distinctly remember the invigorating feeling of speed that changed my perception of places and people.

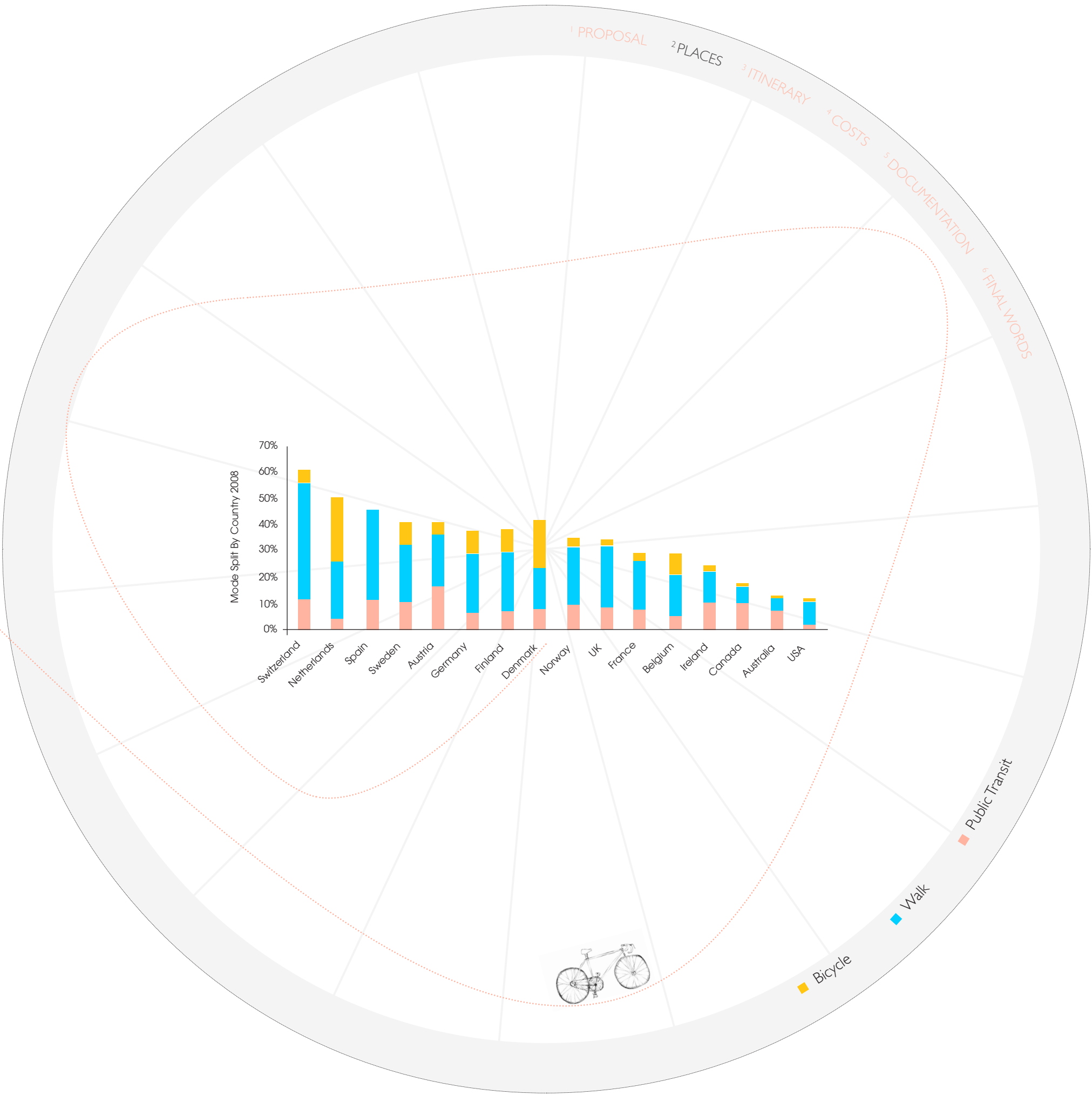
Eventually I learned to ride on my own and my bike became an important mode of transportation for me. As I got older and moved to various places – both urban and suburban neighborhoods – the bikes that I own have transitioned from a vehicle for transportation to a recreational sport equipment. This pedal-driven vehicle has many dedicated followers around world – from people who rely on it daily to those who enjoy it for sport. While in Southern California, car culture has defined our transportation and lifestyle, many parts of Asia and Europe have developed an infrastructure for bicycles.

This leads me to my travel proposal to ride in Denmark, a country where people use bikes as a basic mode of transportation. In fact, there are extensive network of cycle routes throughout the country on a national, regional, and local levels. My proposal is to take one of these national routes, which travels east-west direction from the port city of Esjberg to the western most city of Copenhagen. The ride will be approximately 200 miles long, which I will attempt in increments of 30 – 60 miles per day and stopping to visit historic sites along the way.



Arriving

at the destination of Copenhagen, I want to further investigate the many ways a city accommodates bicycles and what benefits and costs are associated with non-motorized vehicle use. Finally, I want to come away with the trip not just cycling through a country, but really able to learn and quantify the environmental and health benefits of bicycling.



1 PROPOSAL

2 PLACES

3 ITINERARY

4 COSTS

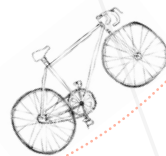
5 DOCUMENTATION

6 FINAL WORDS



Denmark

is a country I've always been intrigued by as an architectural designer. It is known for its modern design aesthetic, sustainability, and architecture. But beyond the great sense of style and beautiful architecture that is produced in Denmark, I am drawn to the quiet charm and unspoiled countryside that makes biking wonderful in Denmark. It would also be a treat to meet other cycling travelers.



1 PROPOSAL

2 PLACES

3 ITINERARY

4 COSTS

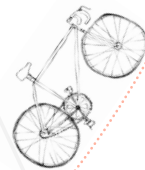
5 DOCUMENTATION

6 FINAL WORDS

Kolding is a provincial town with attractions worth stopping for. A recently restored castle ruin Koldinghus units new and old architecture in a unique manner. Outside, Kolding is the Trapholt Museum of Art, which given its beautiful location is an interesting place to visit.

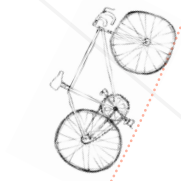
Odense is a city that has transformed their transportation infrastructure into a bike-first system with interconnected system of green spaces, parks, rivers, and creeks. It is also notably the hometown of Hans Christian Andersen. It would be an added treat to visit the new culture centre for children, Fyrtøjet ("The Tinderbox"). Other attractions of interest is the Den Fynske Landsby, Jernalderbyen (Iron Age Settlement).

Slagelse & Roskilde are two towns also worth a visit en route. The Trelleborg Museum tells the story of the Viking castle. Roskilde's Viking Museum exhibits excavated Viking ships and offers sailing trips on board a Viking ship.



1 PROPOSAL 2 PLACES 3 ITINERARY 4 COSTS 5 DOCUMENTATION 6 FINAL WORDS

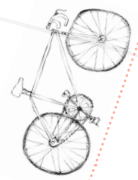
Copenhagen is an ideal example of a progressive city -- one that combines good ideas, planning, and manageable scale. With the vision and investment of its government and people, the city was able to become a clean, green, and vibrant place to live and work. Copenhagen has repeatedly been recognized as one of the cities with the best quality of life.



1 PROPOSAL 2 PLACES 3 ITINERARY 4 COSTS 5 DOCUMENTATION 6 FINAL WORDS

- > Improved user convenience and comfort
 - > Improved accessibility, particularly for non-drivers
 - > Option value
 - > Increased local property values
 - > User enjoyment
 - > Improved public fitness and health
 - > Increased community cohesion
 - > Reduced traffic congestion
 - > Road and parking facility cost savings
 - > Consumer savings
 - > Reduced traffic crashes
 - > Energy conservation
 - > Air and noise pollution reduction
 - > Improved accessibility for non-drivers
 - > Transport cost savings
 - > Reduce sprawl costs
 - > Habitat preservation
 - > More livable communities
- + Potential Benefits

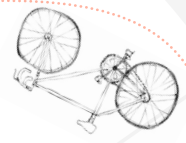
- > Facility costs
 - > Traffic speed reductions
 - > Equipment costs (shoes, bikes, etc.)
 - > Increased crash risk
 - > Increase in travel time
 - > Increase in some development costs
- Potential Costs



Evaluating non-motorized transportation benefits and cost, the benefits outweigh costs.



1 PROPOSAL 2 PLACES 3 ITINERARY 4 COSTS 5 DOCUMENTATION 6 FINAL WORDS



Despite the high cost of traveling in Scandinavia, my travel plans allow for an economic journey. Nevertheless, to travel for 10 days to Europe is a costly endeavor. I'm hopeful that the funds from HMC's [x]ref program will give me the chance to experience a new part of the world in the most adventurous way. It will be a challenging journey, but one that will be a milestone in my life.

TRANSPORTATION COSTS

LA to London Flight \$700

Hartwich to Esjberg Ferry \$200

Copenhagen to LA \$700

LODGING AND MEALS

Hotel & Camp \$1500

Food \$600

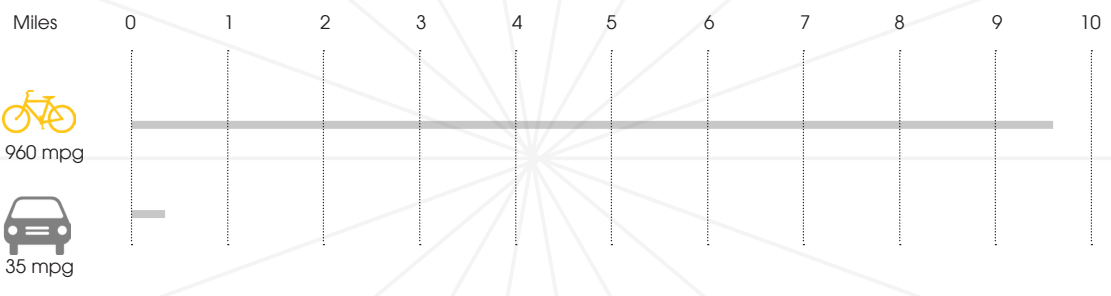
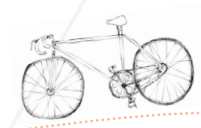
MISCELLANEOUS

Bike Rental \$100

Site Admissions \$200

ESTIMATED TOTAL COST \$4000

¹ PROPOSAL ² PLACES ³ ITINERARY ⁴ COSTS ⁵ DOCUMENTATION ⁶ FINAL WORDS



A bike can travel 960 miles on the equivalent energy of a gallon of gas.

1 PROPOSAL 2 PLACES 3 ITINERARY 4 COSTS 5 DOCUMENTATION 6 FINAL WORDS



For documentation, I plan on tracking my distance, time, location, and speed through an iPhone application called Cyclometer. It will allow me to visualize on a map through the built-in GPS my location, set my routes, and achieve my goal safely and in a timely manner. I will also be able to share my progress and post photos and upload realtime onto a travel blog. Utilizing smart phone technology for this travel will be appropriate as my goal is to record instant and candid observations of the places I will visit in Denmark.

1 PROPOSAL

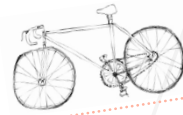
2 PLACES

3 ITINERARY

4 COSTS

5 DOCUMENTATION

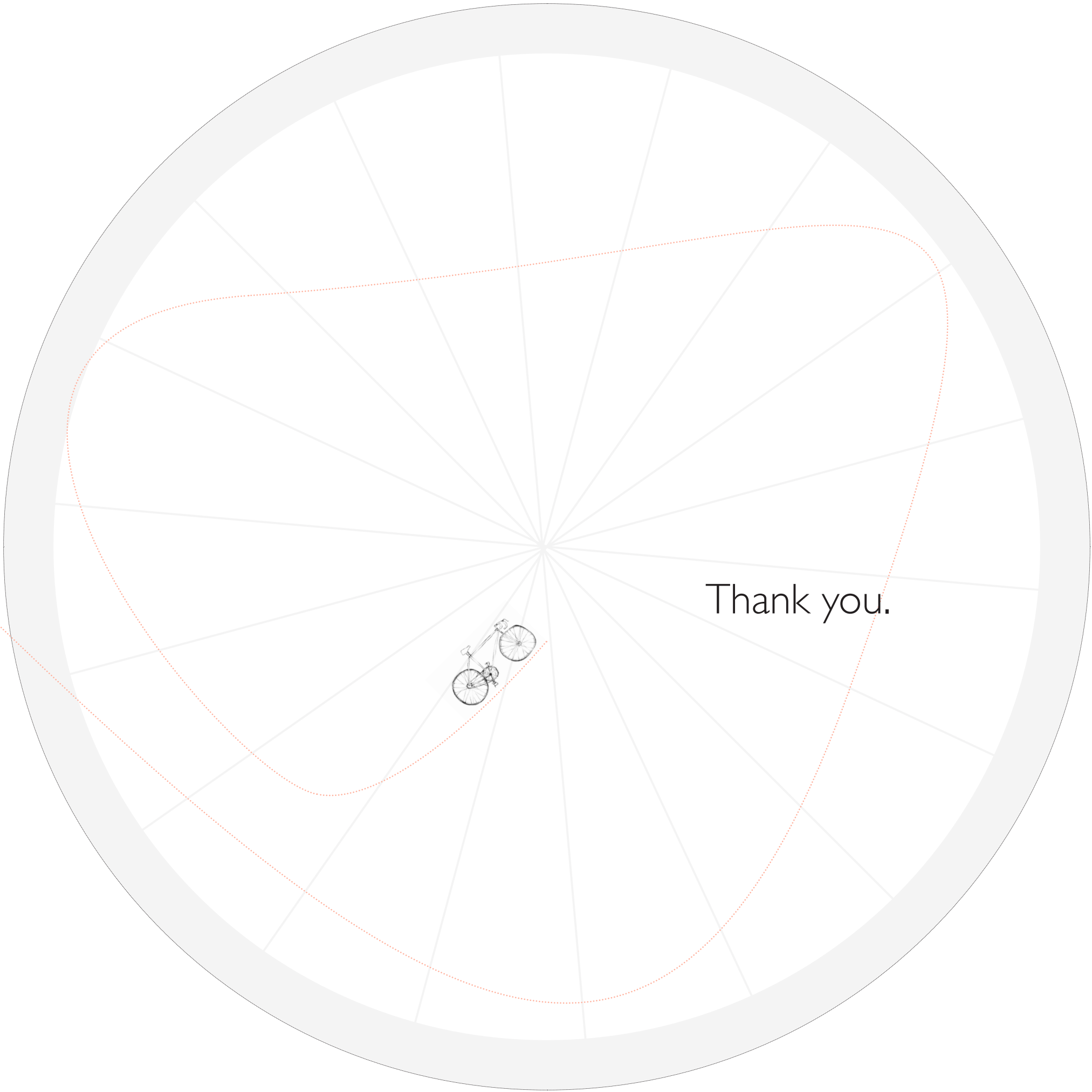
6 FINAL WORDS



I enjoy riding because it allows me to observe and contemplate places and people on a pace and scale that I can control. The physical sensation of riding and feeling connected to life on the streets are all aspects that make biking a great way to engage a new place, its people, and urban structure. Combining cycling with sightseeing is the ideal way to immerse myself in the culture.

In addition, as a designer, my belief in the influence of architecture and its role in society must always be reaffirmed. The common thread that will always be important in my studies and work is the humanistic consideration in design. My current interest in sustainability is not only to make buildings “green” but understanding the larger context where the architecture coexists with the surrounding environment. Knowing about policies and juxtaposing the differences of Denmark and the US can help me better understand why certain systems work in Denmark. I believe that this understanding comes most concretely by physical experience of a particular place.

What I hope to gain is a transformation of my thinking and broadening of my knowledge while letting the journey reveal new discoveries. Upon return, I hope that my documentation can be an educational and inspirational tool for others.



Thank you.