

Healthcare Design Forum

A healthy discussion on designing for care



Please join us on September 26th for an evening of food, drinks and collaboration as we hear directly from a panel of industry leaders to discuss the challenges in designing, planning and working in Healthcare Spaces.

You don't want to miss what promises to be a thoughtful and lively discussion on tackling the ever-changing needs in the Healthcare Industry

When:

September 26, 2019
 Refreshments & Networking 6:00p – 6:45p
 Event Discussion 7:00p – 7:45p
 Q&A 7:45p – 8:00p

Where:

Rodenbeck Showroom
 THE BLOC
 700 S. Flower St., Suite 760
 Los Angeles, CA 90017

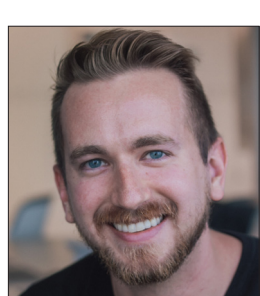
RSVP: Ray Montiel – rmontiel@longust.com

Designing Healthcare Spaces Panel Discussion: Meet the Panelists



Josephine Hao - Moderator
Design Technology Department - Santa Monica College

Josephine Hao has been inspiring new generation of designers for a decade at Cal State University Long Beach, Mount San Antonio College, and Santa Monica College. Prior to teaching, she has worked as a designer for almost two decades for firms such as Gensler and HDR, Inc. Her professional experiences include corporate, entertainment, civic, education as well as creating healing environments for major hospitals on the west coast. Josephine is the current Chair for Design Technology Department which includes these programs: Interior Architectural Design, Entertainment Technology, Graphic Design, and Interaction Design, first baccalaureate degree offered at a Community College.



Brian Schaller - Content Curator
AIA, Project Designer
 HDR

Brian is an experienced Project Designer with a demonstrated history of working on complex healthcare projects from conception to completion. He is presently working on the Cedars-Sinai Marina del Rey Hospital Replacement project. His recently completed work includes Kaiser Permanente's Chino Grand Medical Office Building, Intermountain Healthcare Utah Valley Regional Medical Center Replacement Hospital, UCLA's Outpatient Rehab Clinic and Center for East-West Medicine, and Resiliency Projects post Hurricane Sandy for VA Medical Center's lower east side campus. He holds a Bachelor of Architecture degree from Syracuse University, with a thesis in Architectural Healing Environments. He is passionate about his work in healthcare, and is driven by the positive impacts it will have in the communities for years to come.



Jhiah Chang
AIA, ACHA, EDAC, LEED AP
 Principal ZGF Architects LLP

Jhiah has over 14 years of experience as a planner, project manager, and designer on healthcare and academic projects and holds a Green Lean Belt Certification for Facilities Design. Her passion for working closely with the client to design environments that are sustainable and operationally efficient and that support patient and family-centered care have resulted in several award winning projects across the country. Jhiah was the former co-chair of the AIA Los Angeles Committee on Architecture for Healthcare and past recipient of the U40 AIA Academy of Architecture for Healthcare Under 40 in Healthcare Design award. She also serves on the AIA California Healthcare Facilities Forum committee and is an active participant in program development and guest lecturing at Cal Poly Pomona and University of Southern California's healthcare studio programs.



M. Ferial Asadies
AIA, ARB (UK), LEED AP
 Senior Healthcare Project Manager
 HDR

Ferial has more than 16 years of experience focused on programming, designing, and project management on diverse healthcare facilities including hospitals, clinics, and medical buildings in the UK and the US. Her design philosophy is based on creating healing spaces that engage and inspire patients, their loved ones, and care givers. Her passion, motivation and commitment to clients; combined with a deep involvement on projects from inception to completion; differentiates her work and reputation in the industry. She is an integral part of the HDR LA Healthcare Studio's leadership team, nurturing new client relationships and leading project delivery efforts on a variety of healthcare projects. She is the co-founder and co-chair of the AIA Pasadena and Foothill Healthcare Group.

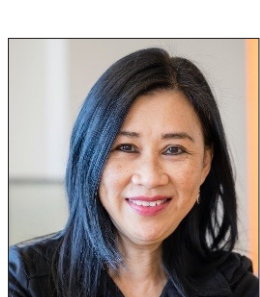


Christine Hardin
LEED AP, EDAC
 Principal, Pickett Design Associates
 Founder, Giving Design

Christine Hardin has over 30 years of experience as a registered interior designer and business owner. She founded Giving Design in 2016 and, through community engagement and by partnering with other nonprofits, is guiding and growing the fledgling nonprofit toward its mission of creating healing environments through design. An active Professional Affiliate member of the Center for Health Design, Christine is also LEED AP and EDAC accredited and is thoroughly familiar with sustainable and evidence-based interior design, as well as Planetree person-centered care best practices. She holds degrees in Interior Design and Exhibit Design from FIT State University of New York.

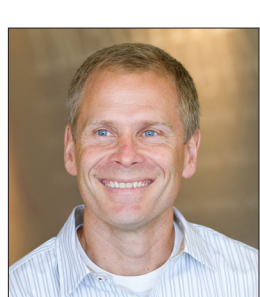
Christine is the sole proprietor of Pickett Design Associates, founded in New York City in 1984, and has worked on many innovative and complex healthcare projects. She understands the connection between a thoughtfully-designed facility and improved patient health.

Giving Design is currently teaming with Pacifica Hospital of the Valley to create a newly renovated outpatient physical therapy unit, as well as partnering with a battered women's shelter in the City of Santa Monica. Christine is passionate about designing spaces that positively impact the health and wellbeing of the people they serve, and is dedicated to bringing this energy and experience to Giving Design.



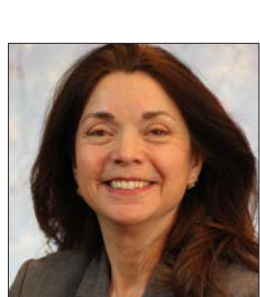
Konni Wong-Doi
CID, LEED AP, NCIDQ
 Principal, HMC Architects

Konni is a talented designer with 30 years of experience. She received her Bachelor of Science in Interior Design from Indiana State University. Her vast experience in healthcare and commercial work has contributed to her receipt of 20+ numerous awards since 2008. She is the first to say that design is not about us, it's about the client. Konni's design approach and commitment to express the client's philosophy allows her to be sensitive to creating an atmosphere that is stimulating and pleasing to all. She believes in the importance of people with every project, making sure input is heard, and needs are met. Konni loves her work, and the results are happy clients and well-designed spaces. As Principal at HMC, she is responsible for programming, space planning, designing, and managing healthcare projects.



Neil Cristal
AIA, LEED AP
 HDR, Senior Project Manager

Neil is skilled at providing leadership for large healthcare, correctional healthcare and federal projects through the planning, design and construction phase. His portfolio includes new hospital replacement and renovation projects and correctional healthcare facilities projects. His recent work as project manager includes the Cedars-Sinai Marina del Rey Hospital Replacement Project, Intermountain Healthcare Utah Valley Regional Medical Center Replacement Hospital, Camp Pendleton Hospital Replacement Project, Fort Bliss Hospital Replacement Project, and California Health Care Facility Stockton for the California Department of Corrections and Rehabilitations. His technical knowledge and organizational skills for developing and delivering large scale projects is his forte.



Patricia Betzhold
Executive Director of Facilities, Strategy, Planning & Design for the Southern California Region, National Facilities Services
 Kaiser Permanente

Pat has been with Kaiser for 22 years and has been responsible for the hands-on management of design and construction for over a billion and a half dollars of work during that time.

Current SoCal responsibilities include design oversight of major projects totaling over 2 billion dollars.

National responsibilities include the ongoing development and implementation of innovations in design focused on improving the quality and affordability of patient care delivery. These include innovations in design and construction, care transformation pilots, innovations and quality improvements in operations and IT, process improvements, and a database of ideas that continues to be developed.

She enjoys KP's collaborative and transparent approach, working diligently to bringing everyone to the table, recognizing that KP's greatest resource is its people. She encourages teams to consider new opportunities, helping teams achieve maximum benefit on multiple platforms (design, image, capacity, cost, innovation, operations, risk management, value). Her approach to design is intentional, aiming for efficient, effective, holistic and innovative design with a focus on sustainable design and the global community. Dedication to Kaiser Permanente and a passionate belief in its missions fuels her commitment to improve capabilities as a leader, as a collaborator, and as contributor as she supports the people and teamwork so critical to NFS's success.

Pat is a licensed architect, graduating from Cal Poly San Luis Obispo and the International Program in Florence, Italy where she also worked for an architectural firm, Studio Planit. Before coming to Kaiser, she also worked for HMC as a project architect for over 10 years, leaving as an associate and Director of Healthcare in 1997.

SPONSORED BY:

