

2021

CIVIC PRACTICE



COUNTY OF SAN DIEGO
Health and Human
Services Agency

North Coastal Live Well Health Center

HMC Architects

HMC ARCHITECTS
PURPOSE IS TO **PARTNER**
WITH OUR CLIENTS AND
COMMUNITIES TO **SERVE**
THE GREATER GOOD. WE DO
THIS THROUGH PASSIONATE
AND EMPOWERED TEAMS
ENGAGED IN A CREATIVE
PROCESS RESULTING
IN IMPACTFUL **DESIGN**
SOLUTIONS THAT **ENRICH**
PEOPLE'S LIVES.



Design for Good

We design for the human experience with an inherent desire to make a difference in our communities.

We stand for tomorrow by designing buildings that positively impact the environment and benefit society while also promoting human health and quality of life.

Designing the spaces people use every day is deeply rewarding. We strive to connect with our clients to better understand their architectural needs, providing them with sound, functional spaces that draw people into an environment where engaging with others comes naturally. At HMC, we've built our reputation on successful client collaboration and designing for the human experience. By speaking with and listening to civic employees and community members who frequent public buildings, we gather insights that spark creative solutions and new ideas. We not only design architecture that's in tune with what a community wants and needs, we do it with their input. We're ready to provide innovative design and outstanding service to your organization. Let us combine our passion with your vision to create a civic building that brings people together and better empowers your employees. To get started, contact us. We can discuss the challenges you face and the new spaces you want to create. Browse the articles below to discover our civic projects and learn more about what we do.

WE DESIGN SPACES TO INSPIRE CIVIC PRIDE

Our clients want architecture that cultivates pride in their communities. To meet their needs, we've designed a variety of spaces that foster community involvement and help civic organizations better serve the public, including convention and community centers, police and fire stations, state welcome hubs, detention and reentry facilities, memorial plazas, libraries, and non-profits. Through creative architectural solutions, we help our clients overcome many challenges.

Design doesn't live in a vacuum—it requires collaboration. We listen—because your insights craft the design. It's your input that makes your space right for you, so we stick to your master plan and design according to your goals. It's this collaboration that allows us to create amazing spaces that leads to delighted clients and thriving communities. At HMC, we believe that the most successful firms will find new ways to meet their clients need for faster delivery of design services.

To learn more about our immersive design process, contact HMC Architects today. Our design experts are available to answer any questions you might have.

81

Years of Design Excellence

280

Design Professionals

#12

BD+C
GIANTS
300
REPORT
2019

Architecture Firms

Services

Architecture
Environmental Graphics
Interiors
Master Planning
Education Planning
Programming
Regenerative Design
Sustainable Strategy
Visualization

Collaboration is in our DNA

Design at HMC is: born from a **big idea**, guided by **clarity**, measured by **context**, and **inspires** those it serves.

At HMC Architects, we're breaking down the walls between our clients and design teams by including them in an immersive process that not only cuts weeks and months off project schedules, but also creates an undeniable synergy where they are designing their projects with us.

We cannot design for the human experience if we cannot be human. To serve every human individually and entirely, we need people that reflect the diversity of our communities. By leveraging that diversity, we create the conditions for an engaged, agile, and resilient workplace. The result is bigger ideas, bolder designs, and a better world. How can we create a truly collaborative experience that accelerates project schedules and engages clients, user groups, and the community in a way that they become active participants in our design process?

We strongly believe in collaborating with our clients and stakeholders from the start, because doing so not only provides the best solutions to their problems, but also produces opportunities previously unrecognized. To that end, our approach includes an intensive, multi-day design process where both the owner and user groups can see the project develop in real-time, right before their eyes.

HMC's design process requires commitment and coordination from our clients in order for us to meet and collaborate with several stakeholders in a condensed time-frame. It requires both parties to be "all in" and focused on the project the entire time. But the effort offers a unique collaborative experience that not only saves time and cost, but also creates an invaluable bonding experience among the team.





88

LEED
Projects



10

LEED
Platinum

70

LEED Accredited
Professionals

BD+C
GIANTS
300
REPORT
2019

#17

Green Building
Design Firm

We restore, renew and
revitalize communities
of tomorrow through
regenerative design.



A Culture of Positive Impact

HMC believes that buildings should positively impact the environment and benefit society while also promoting human health and quality of life.

Achieving this goal requires a new set of skills, tools, and beliefs. It requires a transformation in how we think about buildings, how we design them, and how we ultimately use them. Regenerative strategies in architecture challenge us to design buildings that are not just sustainable, but also aim to restore, renew, and revitalize the environment. We know that we can do more than sustain a future—we can build one that flourishes.

Achieving a building design that reaches beyond sustainability requires collaboration from the start. When you partner with HMC Architects, we'll design a strategy based on where your facility is on the green spectrum and where you want it to be—whether that is achieving an outstanding LEED rating, securing ZNE, or transcending sustainability and reaching for regenerative design. We'll collaborate closely with you every step of the way and listen to the insights offered by the people who use your building every day. By working together to design with an emphasis on energy conservation, water

resilience, and carbon footprint reduction, we help you meet your sustainable architecture objectives in cost-effective ways.

We collaborate with our clients from day one of a project. We lead workshops for clients and their consultants on biophilic design, regenerative strategies, and all of the ways in which we design for the human experience from cradle to grave. We review biophilic design strategies and how they can help meet specific client goals. For example, when a school district wants to increase learning opportunities and productivity, we explain how access to and views of the outdoors can motivate students to feel their best and do their best work.

To make impactful contributions that transcend our roles as architects, we take an open approach to design, combining economic, environmental, and regulatory insights to get a high-level view of society's needs. We also look to the younger members within our firm and in the communities we serve for guidance, as they are especially aware of and driven to help solve deep social and environmental problems. HMC employees are all given space in which to pursue their ethical and professional goals, because when you hire people who share your vision, they get to do what they love while supporting your organization's goals.

While sustainable design attempts to meet the needs of the present without compromising the needs of future generations, regenerative principles seek to replenish and restore natural resources.

Big Ideas Bolder Designs A Better World

In 2009, we founded the HMC Designing Futures Foundation (DFF), a private grant-making foundation that helps deepen our social and environmental impact. The DFF seeks to build a better world by investing in architecture and design, a sustainable and regenerative future, and education programs that train the next generation of innovators.

HMC's immersive process is born of a big idea. We are innovators, constantly seeking out new and improved processes and tools to provide inspiring design. At HMC, we have focused on building resources in-house that move the needle on all aspects of design, delivery, and planning.

DIGITAL PRACTICE

Design Technology implements coding, algorithms, data, & computation to add value throughout the project life-cycle. Connecting geometry, data, analytics, and people—throughout the process—to deliver our best architecture. Our firm has years of experience working with the latest technology. We can help you find the best possible design, materials, and construction workflow to make your dream building a reality.

MEDIALAB

HMC's graphic design team integrates storytelling and identity to our work. Whether through stand-alone commissions or collaborating with a larger team, bring a deeper level of craft and meaning to custom graphic moments that address identity, wayfinding, place-making, and donor recognition, enriching user experience and providing a unique storytelling ability for our clients. By creating authentic, branded interior environments that are inseparable from the architecture, we help organizations celebrate their culture and tell powerful stories.

A FOCUS ON DELIVERY

Lean is not just a set of tools and processes; it is a culture, or a way of thinking and operating. Many companies set out on a lean transformation journey in an effort to streamline individual processes and, in turn, link them together in the most efficient way. Continuous learning and improvement is a cornerstone of a lean culture. There is always a way to make it better, faster, less expensive, or more efficient without sacrificing effectiveness, quality, value, or satisfaction.

Design-Build is about trust between all partners. It requires shared responsibility and clear communication to be successful. At HMC Architects, we make sure all of the design-build projects we are involved in include design features that not only meet our clients' needs but also surpass their expectations.



Community

Community Centers
Convention Centers
Libraries
Transit Facilities
Welcome Centers
Wellness



Justice

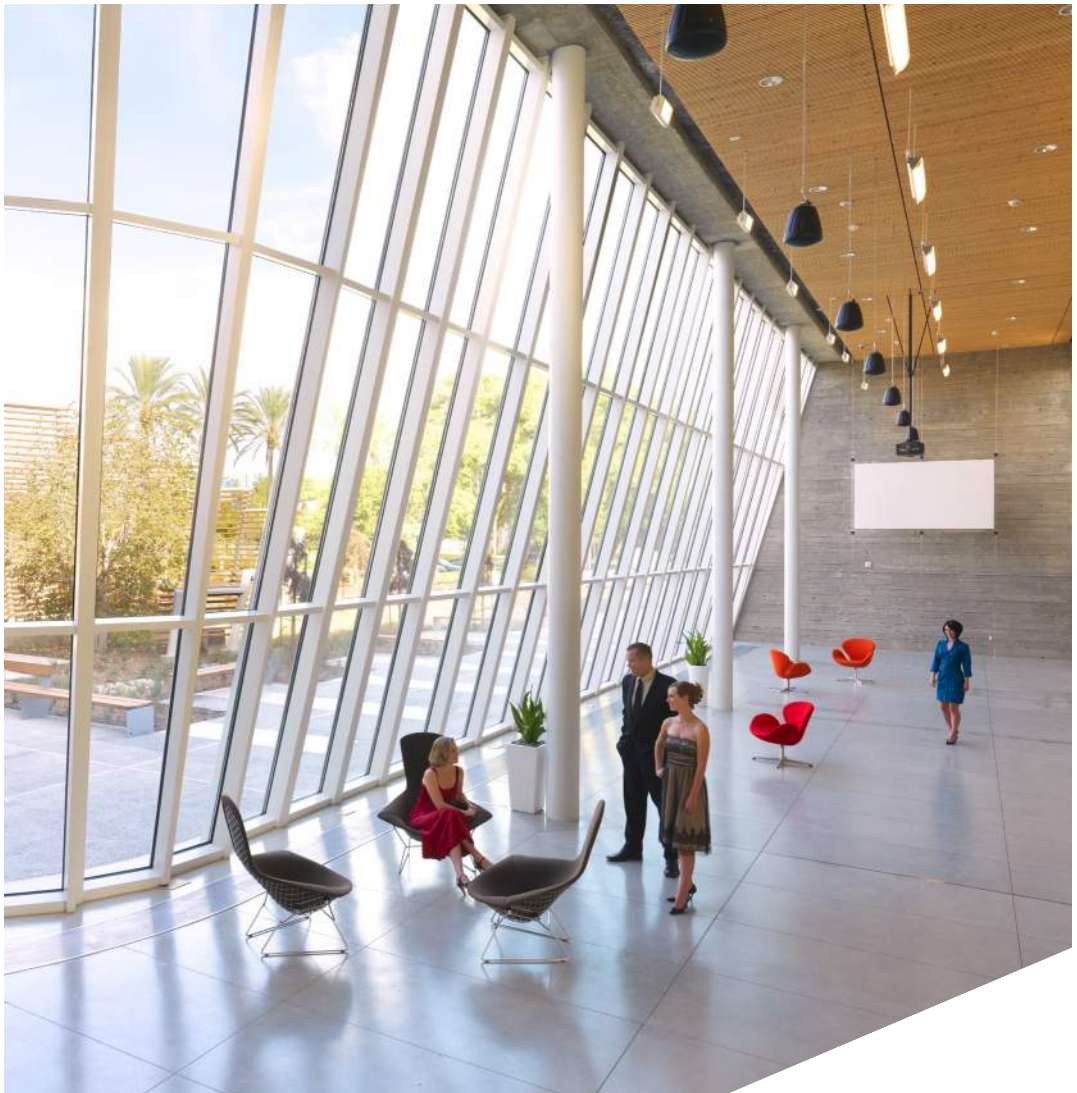
Courts
Detention Centers

Public Safety

Emergency
Operations Centers
Fire Stations
Police Departments

Workplace

Administration
Headquarters
Offices



Spaces That Help Communities Succeed

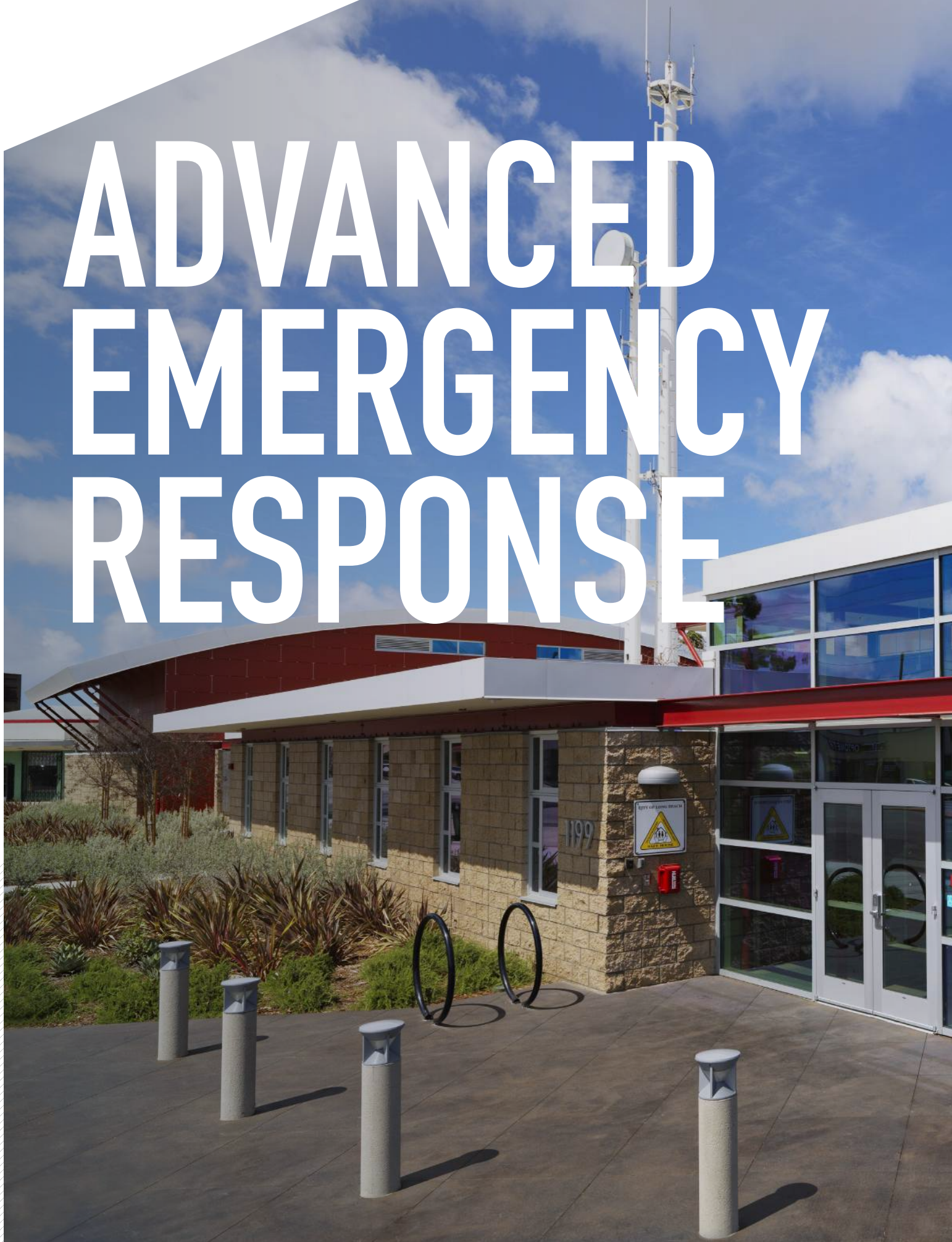
HMC Architects designs modern, efficient, and beautiful civic spaces that bring people together and address their needs.

As civic designers, the best part of our job happens after a project is complete—when we learn from our clients the positive impact our spaces have on the public. From fire stations that serve and protect towns to community centers where people of all ages can meet, learn, play, or create —indoors and outdoors—our public space designs help communities flourish.

Civic architecture isn't only about buildings; it's about people. Our clients and the people who use the buildings we design are the ones who really make public spaces come alive. We simply create settings that enable them to function efficiently, solve problems, and better engage the public.



ADVANCED EMERGENCY RESPONSE





PUBLIC SAFETY





MODERNIZING YOUR WORKSPACE



DESIGNS THAT BETTER SERVE COMMUNITIES

A photograph of a modern building's exterior at dusk. The building features large glass windows and concrete steps leading to the entrance. Three people are visible: a woman walking up the steps, a man standing on the sidewalk, and another woman walking down the steps. The sky is a deep blue, and the building's interior lights are visible through the glass.

JUSTICE

Picture of Health

When a client's purpose is to promote wellness, self-sufficiency, and a better quality of life to families, it's only natural that their built environment be healthy—responsible in energy consumption and harmonious with natural surroundings.

Located in Oceanside, California, the new County of San Diego North Coastal Live Well Health Center Building is a Zero Net Energy (ZNE) facility inspired by the local natural resources it's designed to protect.

Powered entirely by the sun and using no fossil fuels, the building facilitates improved workplace health, productivity, and well-being by inviting sunlight and natural ventilation, and by utilizing thoughtful hardscaping and landscaping features. The interior tells a coastal story

using natural warm wood tones resembling driftwood and vibrant wall colors and flooring to represent local flora. Vertical Teflon-coated fiberglass shade sails protect the naturally ventilated lobby and glass from solar heat gain, while operable windows throughout the building summon ocean breezes. The landscape design consists of three main elements: Native plant material that has the feel of the nearby coastal bluff landscapes; a subsurface drip irrigation to encourage water conservation; and several low rock arroyos to retain and safely direct site water into a series of on-site detention basins.

A shining example of high-performance architecture, the three-story facility houses Aging and Independence Services, a Military and Veterans Resource Center, Community Health Promotions, Regional Administration, Public Health Services, and Behavioral Health Services. The facility, which has already achieved LEED Platinum Certification, is the only ZNE project listed in California that is a County-owned medical office.





County of San Diego North Coastal Live Well Health Center Building

New Construction

Services / Architect of Record, Design
Architect, Interior Design, Sustainable
Strategies

Size / 36K GSF

Cost / \$23M

Completion / 12/2019

Delivery / Design-Build

Sustainable Certification / LEED-NC
Platinum + NZE Certified



Liberty Community Plaza

New Construction

Services / Design Architect, Interior Design, FF&E

Size / 19.5K GSF

Cost / \$12M

Completion / 07/2014

Delivery / Design-Bid-Build

Sustainable Certification / LEED-NC Gold

Center of Attraction

The City of South Whittier, CA has plenty of attractions. Public art, historic homes, and even a 127-year-old school bell. But one thing the unincorporated city never had was a community center of its own. Last year, that all changed.

With support from Los Angeles County and the Community Development Commission to provide for the growing needs of the community, HMC designed a new center that honors and serves the city's more than 58,000 residents. Following active community involvement and three years of planning and design, the end goal was to combine social services and recreational activities for all age groups in a safe, secure environment. Sitting on a prominent street corner, the new 20,000 square foot center pays homage to the community's veterans

with a memorial plaza. A pedestrian promenade then bisects the building through the lobby in a unifying gesture and continues to a landscaped park with lush gardens, walking track, par course with exercise equipment, and a shaded seating area. At night, the contemporary glass lobby illuminates the corner like a lantern. By day, it has views through the building and creates a gateway to the neighborhood. The space includes a multi-purpose room with an adjacent outdoor amphitheater for leasable events. There is a game room, café, conference rooms, community rooms for seniors, and classrooms. There is also dedicated space for Helpline Youth Counseling, which offers an after school tutoring and counseling program for youths and their families. Additionally, the project team's hard work resulted in exceeding the sustainability goals for the project achieving LEED Gold certification from the USGBC. The new center has encouraged an atmosphere conducive to community spirit and active participation in the affairs and progress of the community.



Design to the Rescue

The design was a community effort in its truest sense, with close collaboration between the city and local developers, builders, and architects.

Like a team of dedicated firefighters, the City of Oxnard and our design team had an important mission: to create an affordable fire station that was not only state-of-the-art, but also improved emergency response time. After coordinating a private-public partnership (P3) delivery method, we were able to design and deliver a fully outfitted fire station, complete with fire engines, minus the large capital expenditure. With a brand new, fully operational station at their fingertips, the City of Oxnard is now “leasing-to-own” the property over the course of 20 years.

The new Fire Station No. 8 is a sleek, mid-century modern building that combines the built-to-last essence of a traditional station with smart design elements that speed up response time. The distinctly modern forms of the structure are contrasted by a familiar brick exterior, evocative of a vintage fire station. This classic characteristic combines with large format metal signage to offer a visual gateway into the station's vast drive-thru bays that house the big red fire trucks. Instead of a conventional overhead sectional door, we chose a four-fold bay door that opens much faster. The naturally-lit interiors are designed for seamless, quick movement between the apparatus bays, private quarters, and daily-use facilities, which include administration offices, fitness rooms, and a welcoming public lobby. The deliberate and well thought out design is a result of careful listening sessions and considerable research that honors the reality that, “every second counts.” And with the First-In fire station alert system, fire crews at Fire Station No. 8 can respond the moment they're called to duty.





Oxnard Fire Station No. 8

New Construction

Services / Programming, Architect of Record, Design Architect, Interior Design

Size / 14K GSF

Cost / \$11M

Completion / 10/2015

Delivery / Public-Private Partnership (P3)



Meet Our Experts.

LANCE HOSEY, FAIA, LEED Fellow

As HMC's Chief Impact Officer, Lance's role is to lead strategies to improve the social and environmental impact of all our work. He has authored two books and hundreds of essays on how design can benefit communities. His design work has won many awards and has been published extensively. He has led the design of several dozen LEED Gold and Platinum projects.

Thought Leadership

As a solutions firm, HMC not only relies on research. We invest in it. We dive deep. By connecting intelligence and insight with creativity, we are able to advance innovation to better understand the needs of our clients and bring them the future of design. HMC Architects constantly looks to innovate and expand how we can provide exceptional solutions to our clients, here are some relevant ideas:

How Does Architecture Impact Society?

Civic COVID-19 Research

Accelerating Project Schedules With Immersive Collaboration

Prioritizing Civic Building Renovations for an Increasingly Technological World

Climate Change and Health

Create Access to Nature Through Biophilic Architecture and Design Principles

Envisioning a Regenerative Environment

Firm Recognition

HMC consistently ranks as a top firm by many industry publications, here is a selection:

Architectural Record Top 300 Architecture Firms

Engineering-News Record (ENR) Top 100 Green Design Firms

Building Design + Construction's Giants 300 Report

Top 15 Architecture Firms

Top 20 Green Building Design Firms

Top 100 Government Sector Architecture Firms

Top 25 University Architecture Firms

Top 10 K-12 School Sector Architecture Firms

Top 15 Healthcare Architecture Firms

Zweig Group

Best Firms to Work For 2019

If you need new design or
architectural renovations,
contact HMC Architects:

LANCE HOSEY, FAIA, LEED Fellow

Chief Impact Officer | Civic Practice Leader

lance.hosey@hmcarchitects.com



www.hmcarchitects.com

