

2021

HEALTHCARE PRACTICE

TORRANCE MEMORIAL
MEDICAL CENTER



Melanie & Richard
Lundquist
Tower

HMC Architects

HMC ARCHITECTS PURPOSE
IS TO **PARTNER** WITH OUR
CLIENTS AND COMMUNITIES
TO **SERVE** THE GREATER
GOOD. WE DO THIS
THROUGH PASSIONATE
AND EMPOWERED TEAMS
ENGAGED IN A CREATIVE
PROCESS RESULTING
IN IMPACTFUL **DESIGN**
SOLUTIONS THAT **ENRICH**
PEOPLE'S LIVES.



100%
Employee Owned



Visionary People. Iconic Design.

We design for the human experience with an inherent desire to make a difference in our communities.

We stand for tomorrow by designing buildings that positively impact the environment and benefit society while also promoting human health and quality of life.

Designing the spaces people use every day is deeply rewarding. We strive to connect with our clients to better understand their architectural needs, providing them with sound, functional spaces that draw people into an environment where engaging with others comes naturally. Healthcare design architects create spaces to improve patient outcomes, increase patient satisfaction, and to provide medical staff with spaces to better treat the sick and save lives. At HMC Architects, we incorporate our healthcare clients' needs into the facilities we design and implement features that better support healthcare delivery and the physical and emotional needs all who use these buildings. We also complete these projects on budget and in an amazingly short amount of time

HMC has a strong foothold in designing for the healthcare industry. Deeply entrenched in our geographic locations and involved in all types of healthcare design projects, our experts are passionate and use their knowledge to create modern, efficient, and flexible facilities that enable better patient outcomes.

WE DESIGN BEAUTIFUL, EFFICIENT, AND SUPPORTIVE MEDICAL CARE FACILITIES

When you engage HMC Architects, you get an experienced, creative team that collaborates with you to bring your vision to life. We value communication and balance your needs with beautiful, efficient design. We also stay abreast of industry trends and current research. But our conversations with administrators, doctors, nurses, and medical technicians teach us far more than any research paper ever could. By talking to the people who play critical roles within a medical center, we get multiple perspectives on how the various spaces are currently used and how they can be redesigned to better support staff and patients.

Design doesn't live in a vacuum—it requires collaboration. We listen—because your insights craft the design. It's your input that makes your space right for you, so we stick to your master plan and design according to your goals. It's this collaboration that allows us to create amazing spaces that leads to delighted clients and thriving communities. At HMC, we believe that the most successful firms will find new ways to meet their clients need for faster delivery of design services.

To learn more about our immersive design process, contact HMC Architects today. Our design experts are available to answer any questions you might have.

81

Years of Design
Excellence

270

Design
Professionals

#13

BD+C
GIANTS
300
REPORT
2020

Architecture
Firms

Services

- Architecture
- Environmental Graphics
- Interiors
- Master Planning
- Education Planning
- Programming
- Regenerative Design
- Sustainable Strategy
- Visualization

Collaboration is in our DNA.

Design at HMC is: born from a **big idea**, guided by **clarity**, measured by **context**, and **inspires** those it serves.

#153

Design Firm
2020, ENR

At HMC Architects, we're breaking down the walls between our clients and design teams by including them in an immersive process that not only cuts weeks and months off project schedules, but also creates an undeniable synergy where they are designing their projects with us.

We strongly believe in collaborating with our clients and stakeholders from the start, because doing so not only provides the best solutions to their problems, but also produces opportunities previously unrecognized. To that end, our approach includes an intensive, multi-day design process where both the owner and user groups can see the project develop in real-time, right before their eyes.

HMC's design process requires commitment and coordination from our clients in order for us to meet and collaborate with several stakeholders in a condensed time-frame. It requires both parties to be "all in" and focused on the project the entire time. But the effort offers a unique collaborative experience that not only saves time and cost, but also creates an invaluable bonding experience among the team.

BD+C
MAGAZINE,
OUTPATIENT
FACILITIES
OF 2020

#7

Healthcare
Firm

We cannot design for the human experience if we cannot be human. To serve every human individually and entirely, we need people that reflect the diversity of our communities. By leveraging that diversity, we create the conditions for an engaged, agile, and resilient workplace. The result is bigger ideas, bolder designs, and a better world. How can we create a truly collaborative experience that accelerates project schedules and engages clients, user groups, and the community in a way that they become active participants in our design process?

TOP 300 U.S.
ARCHITECTURE
FIRMS OF 2020,
ARCHITECTURAL
RECORD

#29

Architecture
Firm



We restore, renew and
revitalize communities
of tomorrow through
regenerative design.



88

LEED
Projects



10

LEED
Platinum

70

LEED Accredited
Professionals

BD+C
GIANTS
300
REPORT
2019

#17

Green Building
Design Firm



A Culture of Regenerative Design

HMC believes that buildings should positively impact the environment and benefit society while also promoting human health and quality of life.

Achieving this goal requires a new set of skills, tools, and beliefs. It requires a transformation in how we think about buildings, how we design them, and how we ultimately use them. Regenerative strategies in architecture challenge us to design buildings that are not just sustainable, but also aim to restore, renew, and revitalize the environment. We know that we can do more than sustain a future—we can build one that flourishes.

Achieving a building design that reaches beyond sustainability requires collaboration from the start. When you partner with HMC Architects, we'll design a strategy based on where your facility is on the green spectrum and where you want it to be—whether that is achieving an outstanding LEED rating, securing ZNE, or transcending sustainability and reaching for regenerative design. We'll collaborate closely with you every step of the way and listen to the insights offered by the people who use your building every day. By working together to design with an emphasis on energy conservation, water

resilience, and carbon footprint reduction, we help you meet your sustainable architecture objectives in cost-effective ways.

We collaborate with our clients from day one of a project. We lead workshops for clients and their consultants on biophilic design, regenerative strategies, and all of the ways in which we design for the human experience from cradle to grave. We review biophilic design strategies and how they can help meet specific client goals. For example, when a school district wants to increase learning opportunities and productivity, we explain how access to and views of the outdoors can motivate students to feel their best and do their best work.

To make impactful contributions that transcend our roles as architects, we take an open approach to design, combining economic, environmental, and regulatory insights to get a high-level view of society's needs. We also look to the younger members within our firm and in the communities we serve for guidance, as they are especially aware of and driven to help solve deep social and environmental problems. HMC employees are all given space in which to pursue their ethical and professional goals, because when you hire people who share your vision, they get to do what they love while supporting your organization's goals.

While sustainable design attempts to meet the needs of the present without compromising the needs of future generations, regenerative principles seek to replenish and restore natural resources.

Big Ideas. Bolder Designs. A Better World.

In 2009, we founded the HMC Designing Futures Foundation (DFF), a private grant-making foundation that helps deepen our social and environmental impact. The DFF seeks to build a better world by investing in architecture and design, a sustainable and regenerative future, and education programs that train the next generation of innovators.

HMC's immersive process is born of a big idea. We are innovators, constantly seeking out new and improved processes and tools to provide inspiring design. At HMC, we have focused on building resources in-house that move the needle on all aspects of design, delivery, and planning.

DIGITAL PRACTICE

Design Technology implements coding, algorithms, data, & computation to add value throughout the project life-cycle. Connecting geometry, data, analytics, and people—throughout the process—to deliver our best architecture. Our firm has years of experience working with the latest technology. We can help you find the best possible design, materials, and construction workflow to make your dream building a reality.

MEDIALAB

HMC's graphic design team integrates storytelling and identity to our work. Whether through stand-alone commissions or collaborating with a larger team, bring a deeper level of craft and meaning to custom graphic moments that address identity, wayfinding, place-making, and donor recognition, enriching user experience and providing a unique storytelling ability for our clients. By creating authentic, branded interior environments that are inseparable from the architecture, we help organizations celebrate their culture and tell powerful stories.

A FOCUS ON DELIVERY

Lean is not just a set of tools and processes; it is a culture, or a way of thinking and operating. Many companies set out on a lean transformation journey in an effort to streamline individual processes and, in turn, link them together in the most efficient way. Continuous learning and improvement is a cornerstone of a lean culture. There is always a way to make it better, faster, less expensive, or more efficient without sacrificing effectiveness, quality, value, or satisfaction.

Design-Build is about trust between all partners. It requires shared responsibility and clear communication to be successful. At HMC Architects, we make sure all of the design-build projects we are involved in include design features that not only meet our clients' needs but also surpass their expectations.



Inpatient

Acute Care
Emergency Departments
Hospitals
Patient Towers
Skilled Nursing



Outpatient

Ambulatory Care
Clinics
Medical Office Buildings

Medical Centers

Academic Medical Centers
Central Utility Plants
Executive Architect
Parking Structures



Architecture Designed to Lift Spirits

Our healthcare architecture design teams understand your new construction and renovation challenges.

Healthcare organizations must not only adhere to tight budgets, but also keep up with the swift pace of technological advancements to avoid renovating again in just a few short years. We also understand that healthcare is a business and that buildings need to efficiently function for revenue and staffing, and be brought to market quickly. Using any project delivery approach, we create an innovative, collaborative team that defines

goals, costs, and planning solutions early so we can move forward with design and accelerate construction. In our decades of experience, we've gained insights into how healthcare environments affect patient recovery. So, we apply evidenced-based design to healthcare facilities, using features that have therapeutic value.





A photograph of a modern hospital room. In the center, a wall-mounted digital display shows the time 5:33 in red. Below it is a round analog clock. To the right, a flat-screen monitor is mounted on a wall, displaying a 3D medical visualization of a room. In the foreground, a stainless steel medical cart with a monitor and IV drip stands on wheels. To the left, a hospital bed is partially visible, covered with blue linens. The room has a clean, professional appearance with light-colored walls and a dark wood door on the right.

SPECIALIZED CARE

INPATIENT

Pharmacy

5

1B

Pharmacy
Farmacia

Drop Off

8

9

10

11

12

OUTPATIENT

O
E



CLINICAL CARE ENVIRONMENTS



**CRAFTING
CAMPUSES**



A Perfect Fit

For over 45 years, Henry Mayo Newhall Hospital in Valencia, California has served the healthcare needs of the growing Santa Clarita Valley. With more neighbors in need of maternity care, the design-build team of Bernards and HMC Architects focused on designing a new tower centered on the patient experience that integrated seamlessly into the existing campus.

The new six-story, 116 bed patient tower features a dedicated maternity floor with seven labor and delivery rooms, 22 post-and antepartum rooms, two C-section operating rooms, three medical-surgical floors, a new kitchen and cafeteria, and shell space for future expansion.

Strategically located among three of the campus' existing buildings, the new tower faced a challenging fit. As the only design team to figure out the solution, we pulled its foundation away from existing buildings and provided more square footage with a section cantilevered over an existing building. The tower takes its material and proportion cues from the surrounding campus and connects to a neighboring building via an enclosed bridge. Considered the project's "fifth wall," the outdoor environment was integrated into the interior design to decrease anxiety and encourage healing. Each patient room has an open view to the picturesque valley, waiting areas feature large floor-to-ceiling windows, and there is an abundance of daylight at the end of each corridor. The natural, intuitive design will welcome Henry Mayo's newest neighbors for years to come.

Winner of the
2020 Design-
Build Institute
of America
National Award
of Excellence
in Healthcare
Facilities





Henry Mayo Newhall Hospital Patient Tower

New Construction

Services: Full Architectural Services,
Interior Design, Medical Planning

Size: 160,000 GSF

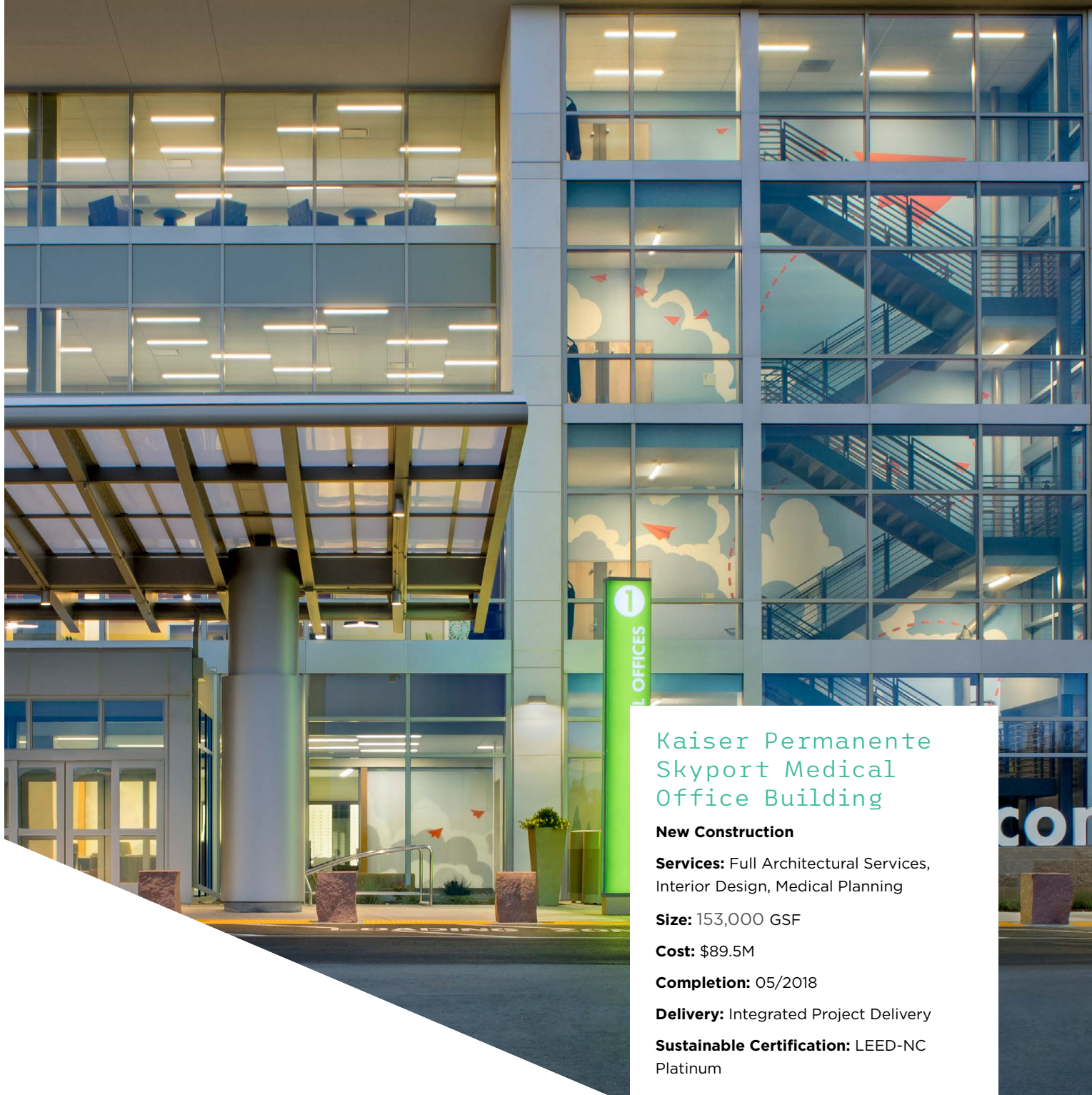
Cost: \$129.8M

Completion: 12/2019

Delivery: Design-Build



KAISER PERMANENTE



Kaiser Permanente Skyport Medical Office Building

New Construction

Services: Full Architectural Services,
Interior Design, Medical Planning

Size: 153,000 GSF

Cost: \$89.5M

Completion: 05/2018

Delivery: Integrated Project Delivery

Sustainable Certification: LEED-NC
Platinum

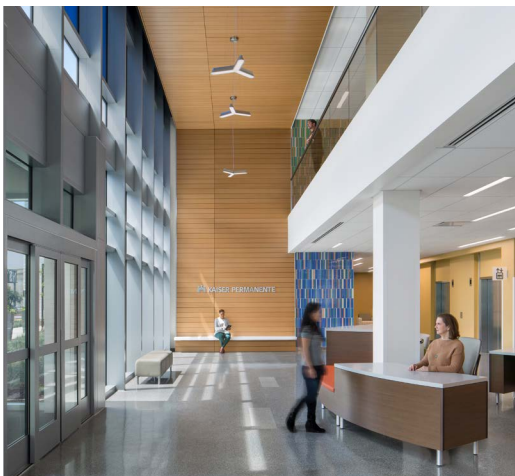
High Performance and Hospitality Driven

The new Kaiser Permanente Skyport Medical Office Building is just the kind of tech smart, cool, hospitality-driven experience you'd expect in the Silicon Valley.

Responding to the progressive nature of healthcare and the needs of modern-day patients, visitors can check-in remotely on their personal devices. Healthcare delivery is changing fast. To adapt to our client's foreseeable needs, our Interiors team – for the first time ever – made all of the main entry staff check-in furniture movable and also removable.

A bright, open, and welcoming space envelops members upon entry. Wayfinding is a breeze with color-coded portals for each service line, and each elevator stop features color-compatible glass tiles and large numbers. As a nod to the nearby airport, we installed propeller light fixtures in the lobby, while vibrant colors

and graphic murals of paper airplanes accent the walls along the stairwell. The colorful landscaping, Thrive path, and sculpture garden create a tranquil, healing environment, and the on-site indoor/outdoor cafés invites members to lounge or work during visits. To extend healthcare services to the growing San Jose community the MOB will accommodate 100 providers. Specialized clinics include dialysis training, family practice, internal medicine, pediatrics, OB/GYN, orthopedics, imaging, laboratory, pharmacy, and optometry. Outfitted with various sustainable elements including: Dynamic tinting glazing, renewable energy, controllability of systems-thermal controls and systems-lighting, design for active occupants program, cool roof, and heat island preventive paving, the project is LEED Platinum certificated. To help prepare for future growth within the community, we strategically planned the site to allow for one or two future expansion MOBs and a parking structure. Over time, this plan will give the site capability to triple its patient care.



LEED-NC
Platinum v4.1
certified
project



Aiming for Patient Satisfaction

Evidence-based practices. New technology. Speed to market. The goals for Henderson Hospital were ambitious.

To become a new industry standard for the Las Vegas area, our team knew that a rigorous, lean approach to collaboration and innovation was critical. So, we created an integrated team environment where success and challenges were shared. The team—consisting of the owner, contractors, HMC Architects and several trade partners—successfully designed and constructed the hospital in 27 months, making it *one of the fastest hospitals built in the western U.S.* But speed to market didn't mean a compromise in value.

Part of the new Union Village—the world's first integrated health village—we set out to design, build and operate a Lean, efficient facility that allows for flexibility, productivity, and delivery of quality services that improve the patient

and family experience for this growing southern Nevada community. Use of both prefabrication and on-site place modular construction contributed to a much faster, error free construction process. With patient satisfaction being a key driver, we created private patient rooms and solutions that reduce noise and limit the spread of bacteria. Our innovation to incorporate built-in narrow spectrum infection-control lighting in key treatment and operating rooms provides the safest, most infection free care environments possible. To promote patient healing and reduce the spread of germs, we incorporated silver ion-infused countertops in patient care areas, antimicrobial coatings on door handles, and indigo lighting in the surgery department to help reduce bacteria. Together, the integrated project team delivered a 214-bed acute healthcare facility that offers emergency care, women's services, surgical services, and comprehensive care—bringing immense value to the community.

Designed and constructed in 27 months, making it one of the fastest hospitals built in the western U.S.





University Health
Services
Henderson Hospital

New Construction

Services: Full Architectural Services,
Interior Design, Medical Planning

Size: 256,000 GSF

Cost: \$127.8M

Completion: 08/2016

Delivery: Integrated Project Delivery,
Lean Project Delivery



Meet Our Experts.

Christopher Naughton, AIA

Chris is HMC's Healthcare Practice Leader located primarily at the firm's Sacramento Studio. With 30 years as a healthcare architect, it's been his personal mission to design a better patient and family experience. In addition to architecture, Chris is a practicing artist who has written and presented on the importance of art in the healing process.

Thought Leadership

As a solutions firm, HMC not only relies on research, we invest in it. We dive deep. By connecting intelligence and insight with creativity, we are able to advance innovation to better understand the needs of our clients and bring them the future of design. HMC Architects constantly looks to innovate and expand how we can provide exceptional solutions to our clients, here are some relevant ideas:

[Healthcare COVID-19 Research](#)

[HMC Architects Releases Cancer Care Study](#)

[What Is the Role of the Architect In Healthcare Data Security?](#)

[Hospital Architecture Design & Planning: Promoting Patient Safety](#)

[BIM Construction: The Combined Power of Drone Technology and Building Information Modeling](#)

[Create Access to Nature Through Biophilic Architecture and Design Principles](#)

[Envisioning a Regenerative Environment](#)

[Accelerating Project Schedules With Immersive Collaboration](#)

Firm Recognition

HMC consistently ranks as a top firm by many industry publications, here is a selection:

Architectural Record Top 300 Architecture Firms

Engineering-News Record (ENR) Top 100 Green Design Firms

Building Design + Construction's Giants 300 Report

Top 15 Architecture Firms

Top 15 Healthcare Architecture Firms

Top 20 Green Building Design Firms

Top 25 University Architecture Firms

Top 10 K-12 School Sector Architecture Firms

Top 100 Government Sector Architecture Firms

Zweig Group

Best Firms to Work For 2019

If your campus needs
architectural renovations
or new designs, contact
HMC Architects:

Christopher Naughton

Healthcare Practice Leader

christopher.naughton@hmcarchitects.com

www.hmcarchitects.com

