

2023

HEALTHCARE PRACTICE BROCHURE

HMC Architects

design for good.

Founded with the purpose of anticipating community needs, HMC aims to create designs that have a positive impact, now and into the future.

We focus primarily on opportunities to have the most direct contribution to communities — through healthcare, education, and civic spaces.



Visionary People. Iconic Design.

We design for the human experience with an inherent desire to make a difference in our communities. We stand for tomorrow by designing buildings that positively impact the environment and benefit society while also promoting human health and quality of life.

Designing the spaces people use every day is deeply rewarding. We strive to connect with our clients to better understand their architectural needs, providing them with sound, functional spaces that draw people into an environment where engaging with others comes naturally. Healthcare design architects create spaces to improve patient outcomes, increase patient satisfaction, and to provide medical staff with spaces to better treat the sick and save lives. At HMC Architects, we incorporate our healthcare clients' needs into the facilities we design and implement features that better support healthcare delivery and the physical and emotional needs of all who use these buildings. We also complete these projects on budget and in an amazingly short amount of time.

HMC has a strong foothold in designing for the healthcare industry. Deeply entrenched in our geographic locations and involved in all types of healthcare design projects, our experts are passionate and use their knowledge to create modern, efficient, and flexible facilities that enable better patient outcomes.

WE DESIGN BEAUTIFUL, EFFICIENT, AND SUPPORTIVE MEDICAL CARE FACILITIES

When you engage HMC Architects, you get an experienced, creative team that collaborates with you to bring your vision to life. We value communication and balance your needs with beautiful, efficient design. We stay abreast of industry trends and current research by having conversations with administrators, doctors, nurses, and medical technicians. By talking to the people who play critical roles within a medical center, we get multiple perspectives on how the various spaces are currently used and how they can be redesigned to better support staff and patients. This teaches us far more than any research paper every could.

Design doesn't live in a vacuum—it requires collaboration. We listen—because your insights craft the design. It's your input that makes the space right for you, so we stick to your master plan and design according to your goals. It's this collaboration that allows us to create amazing spaces that leads to delighted clients and thriving communities. At HMC, we believe that the most successful firms will find new ways to meet their clients need for faster delivery of design services. **To learn more about our immersive design process, contact HMC Architects today. Our design experts are available to answer any questions you might have.**

83

Years of Design Excellence

315

Design Professionals

#2

ENR
CALIFORNIA
2022

Architecture Firms

Services

Architecture
Environmental Graphics
Interiors
Master Planning
Education Planning
Programming
Sustainable Design
Sustainable Strategy
Visualization

Collaboration is in our DNA.

Design at HMC is born from a **big idea**, guided by **clarity**, measured by **context**, and **inspires** those it serves.

At HMC Architects, we're breaking down the walls between our clients and design teams by including them in an immersive process that not only cuts weeks and months off project schedules, but also creates an undeniable synergy where they are designing their projects with us.

We cannot design for the human experience if we cannot be human. To serve every human individually and entirely, we need people that reflect the diversity of our communities. By leveraging that diversity, we create the conditions for an engaged, agile, and resilient workplace. The result is bigger ideas, bolder designs, and a better world. How can we create a truly collaborative experience that accelerates project schedules and engages clients, user groups, and the community in a way that they become active participants in our design process?

We strongly believe in collaborating with our clients and stakeholders from the start, because doing so not only provides the best solutions to their problems, but also produces opportunities previously unrecognized. To that end, our approach includes an intensive, multi-day design process where both the owner and user groups can see the project develop in real-time, right before their eyes.

HMC's design process requires commitment and coordination from our clients in order for us to meet and collaborate with several stakeholders in a condensed time-frame. It requires both parties to be "all in" and focused on the project the entire time. But the effort offers a unique collaborative experience that not only saves time and cost, but also creates an invaluable bonding experience among the team.





86

LEED
Projects



11

LEED
Platinum

32

LEED Accredited
Professionals

BD+C
GIANTS
300
REPORT
2019

#17

Green Building
Design Firm

We restore, renew and
revitalize communities
of tomorrow through
sustainable design.



A Culture of Positive Impact

HMC believes that buildings should positively impact the environment and benefit society while also promoting human health and quality of life.

Achieving this goal requires a new set of skills, tools, and beliefs. It requires a transformation in how we think about buildings, how we design them, and how we ultimately use them. Sustainable strategies in architecture challenge us to design buildings that are not just sustainable, but also aim to restore, renew, and revitalize the environment. We know that we can do more than sustain a future—we can build one that flourishes.

Achieving a building design that reaches beyond sustainability requires collaboration from the start. When you partner with HMC Architects, we'll design a strategy based on where your facility is on the green spectrum and where you want it to be—whether that is achieving an outstanding LEED rating, securing ZNE, or transcending sustainability and reaching for sustainable design. We'll collaborate closely with you every step of the way and listen to the insights offered by the people who use your building every day. By working together to design with an emphasis on energy conservation, water

resilience, and carbon footprint reduction, we help you meet your sustainable architecture objectives in cost-effective ways.

We collaborate with our clients from day one of a project. We lead workshops for clients and their consultants on biophilic design, sustainable strategies, and all of the ways in which we design for the human experience from cradle to grave. We review biophilic design strategies and how they can help meet specific client goals. For example, when a school district wants to increase learning opportunities and productivity, we explain how access to and views of the outdoors can motivate students to feel their best and do their best work.

To make impactful contributions that transcend our roles as architects, we take an open approach to design, combining economic, environmental, and regulatory insights to get a high-level view of society's needs. We also look to the younger members within our firm and in the communities we serve for guidance, as they are especially aware of and driven to help solve deep social and environmental problems. HMC employees are all given space in which to pursue their ethical and professional goals, because when you hire people who share your vision, they get to do what they love while supporting your organization's goals.

While sustainable design attempts to meet the needs of the present without compromising the needs of future generations, sustainable principles seek to replenish and restore natural resources.

Big Ideas. Bolder Designs. A Better World.

In 2009, we founded the HMC Designing Futures Foundation (DFF), a private grant-making foundation that helps deepen our social and environmental impact. The DFF seeks to build a better world by investing in architecture and design, a sustainable and sustainable future, and education programs that train the next generation of innovators.

HMC's immersive process is born of a big idea. We are innovators, constantly seeking out new and improved processes and tools to provide inspiring design. At HMC, we have focused on building resources in-house that move the needle on all aspects of design, delivery, and planning.

DIGITAL PRACTICE

Design Technology implements coding, algorithms, data, & computation to add value throughout the project life-cycle. Connecting geometry, data, analytics, and people—throughout the process—to deliver our best architecture. Our firm has years of experience working with the latest technology. We can help you find the best possible design, materials, and construction workflow to make your dream building a reality.

MEDIALAB

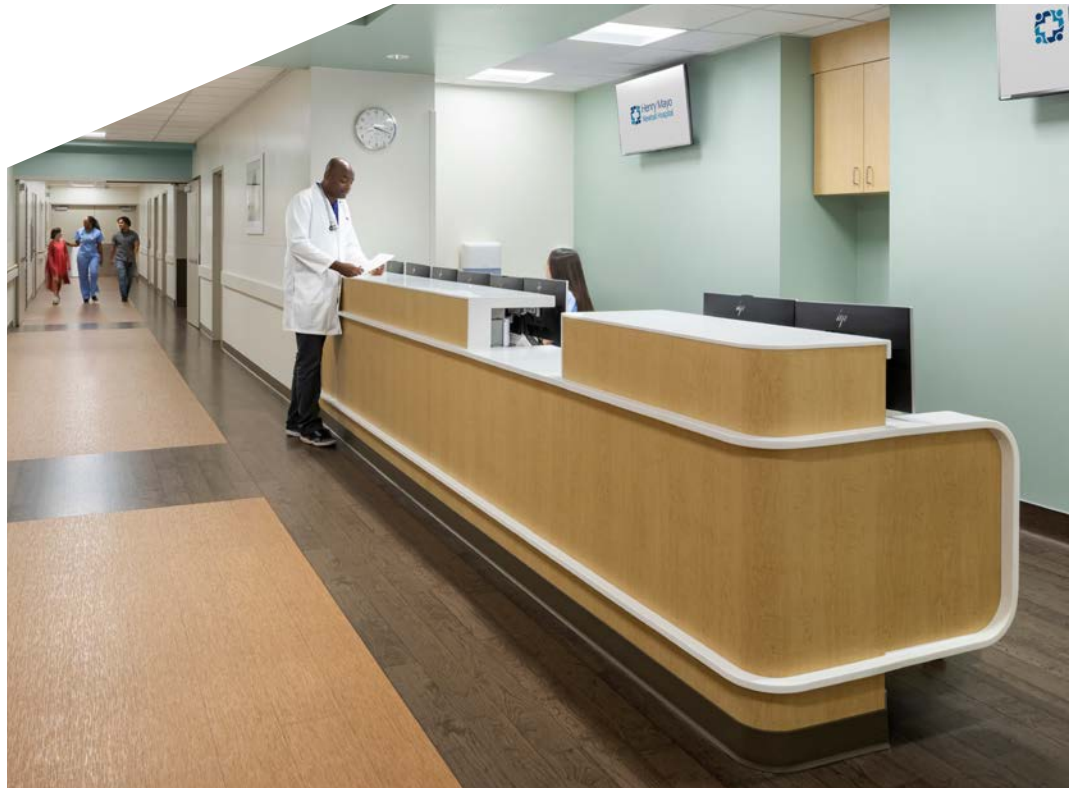
HMC's graphic design team integrates storytelling and identity to our work. Whether through stand-alone commissions or collaborating with a larger team, bring a deeper level of craft and meaning to custom graphic moments that address identity, wayfinding, place-making, and donor recognition, enriching user experience and providing a unique storytelling ability for our clients. By creating authentic, branded interior environments that are inseparable from the architecture, we help organizations celebrate their culture and tell powerful stories.

A FOCUS ON DELIVERY

Lean is not just a set of tools and processes; it is a culture, or a way of thinking and operating. Many companies set out on a lean transformation journey in an effort to streamline individual processes and, in turn, link them together in the most efficient way. Continuous learning and improvement is a cornerstone of a lean culture. There is always a way to make it better, faster, less expensive, or more efficient without sacrificing effectiveness, quality, value, or satisfaction.

Design-Build is about trust between all partners. It requires shared responsibility and clear communication to be successful. At HMC Architects, we make sure all of the design-build projects we are involved in include design features that not only meet our clients' needs but also surpass their expectations.





Inpatient

- Acute Care
- Emergency Departments
- Hospitals
- Patient Towers
- Skilled Nursing

Outpatient

- Ambulatory Care
- Clinics
- Medical Office Buildings

Medical Centers

- Academic Medical Centers
- Central Utility Plants
- Executive Architect
- Parking Structures



Architecture Designed to Lift Spirits

Our healthcare architecture design teams understand your new construction and renovation challenges.

Healthcare organizations must not only adhere to tight budgets, but also keep up with the swift pace of technological advancements to avoid renovating again in just a few short years. We also understand that healthcare is a business and that buildings need to efficiently function for revenue and staffing, and be brought to market quickly. Using any project delivery approach, we create an innovative, collaborative team that defines

goals, costs, and planning solutions early so we can move forward with design and accelerate construction. In our decades of experience, we've gained insights into how healthcare environments affect patient recovery. So, we apply evidenced-based design to healthcare facilities, using features that have therapeutic value.



A photograph of a modern hospital operating room. In the center is a surgical table on a mobile stand, covered with blue drapes. Above the table are large surgical lights. To the left, a person in blue scrubs is walking away from the camera. The room is filled with medical equipment, including monitors, IV stands, and storage cabinets. A large clock and a digital display are on the wall. The text "SPECIALIZED CARE" is overlaid in large white letters on the right side of the image.

SPECIALIZED CARE

INPATIENT

A Perfect Fit

For over 45 years, Henry Mayo Newhall Hospital in Valencia, California has served the healthcare needs of the growing Santa Clarita Valley. With more neighbors in need of maternity care, the design-build team of Bernards and HMC Architects focused on designing a new tower centered on the patient experience that integrated seamlessly into the existing campus.

The new six-story, 116 bed patient tower features a dedicated maternity floor with seven labor and delivery rooms, 22 post-and antepartum rooms, two C-section operating rooms, three medical-surgical floors, a new kitchen and cafeteria, and shell space for future expansion.

Strategically located among three of the campus' existing buildings, the new tower faced a challenging fit. As the only design team to figure out the solution, we pulled its foundation away from existing buildings and provided more square footage with a section cantilevered over an existing building. The tower takes its material and proportion cues from the surrounding campus and connects to a neighboring building via an enclosed bridge. Considered the project's "fifth wall," the outdoor environment was integrated into the interior design to decrease anxiety and encourage healing. Each patient room has an open view to the picturesque valley, waiting areas feature large floor-to-ceiling windows, and there is an abundance of daylight at the end of each corridor. The natural, intuitive design will welcome Henry Mayo's newest neighbors for years to come.

Winner of the 2020 Design-Build Institute of America National Award of Excellence in Healthcare Facilities



Henry Mayo Newhall Hospital Patient Tower

New Construction

Services: Full Architectural Services, Interior Design, Medical Planning

Size: 160,000 GSF

Cost: \$129.8M

Completion: 12/2019

Delivery: Design-Build



CRAFTING CAMPUSES

MASTER PLANNING



High Performance and Hospitality Driven

The new Kaiser Permanente Skyport Medical Office Building is just the kind of tech smart, cool, hospitality-driven experience you'd expect in the Silicon Valley.

Responding to the progressive nature of healthcare and the needs of modern-day patients, visitors can check-in remotely on their personal devices. Healthcare delivery is changing fast. To adapt to our client's foreseeable needs, our Interiors team – for the first time ever – made all of the main entry staff check-in furniture movable and also removable.

A bright, open, and welcoming space envelops members upon entry. Wayfinding is a breeze with color-coded portals for each service line, and each elevator stop features color-compatible glass tiles and large numbers. As a nod to the nearby airport, we installed propeller light fixtures in the lobby, while vibrant colors

and graphic murals of paper airplanes accent the walls along the stairwell. The colorful landscaping, Thrive path, and sculpture garden create a tranquil, healing environment, and the on-site indoor/outdoor cafés invites members to lounge or work during visits. To extend healthcare services to the growing San Jose community the MOB will accommodate 100 providers. Specialized clinics include dialysis training, family practice, internal medicine, pediatrics, OB/GYN, orthopedics, imaging, laboratory, pharmacy, and optometry. Outfitted with various sustainable elements including: Dynamic tinting glazing, renewable energy, controllability of systems-thermal controls and systems-lighting, design for active occupants program, cool roof, and heat island preventive paving, the project is LEED Platinum certificated. To help prepare for future growth within the community, we strategically planned the site to allow for one or two future expansion MOB's and a parking structure. Over time, this plan will give the site capability to triple its patient care.

Kaiser Permanente Skyport Medical Office Building

New Construction

Services: Full Architectural Services, Interior Design, Medical Planning

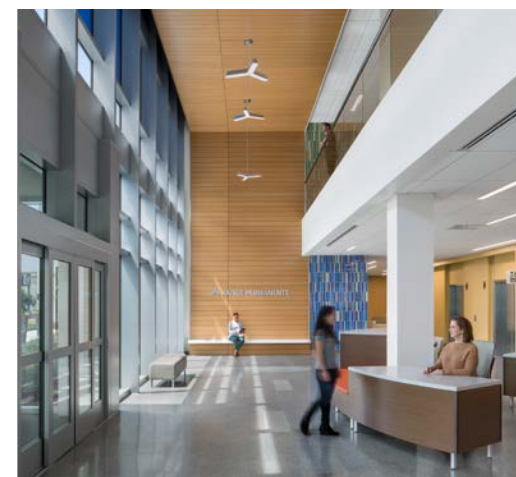
Size: 153,000 GSF

Cost: \$89.5M

Completion: 05/2018

Delivery: Integrated Project Delivery

Sustainable Certification: LEED-NC Platinum



LEED-NC Platinum
v4.1 certified
project





CLINICAL CARE ENVIRONMENTS

OUTPATIENT

Keeping Pace

Built upon the existing plan, the village concept establishes a new identity within the campus that enhances the public realm.

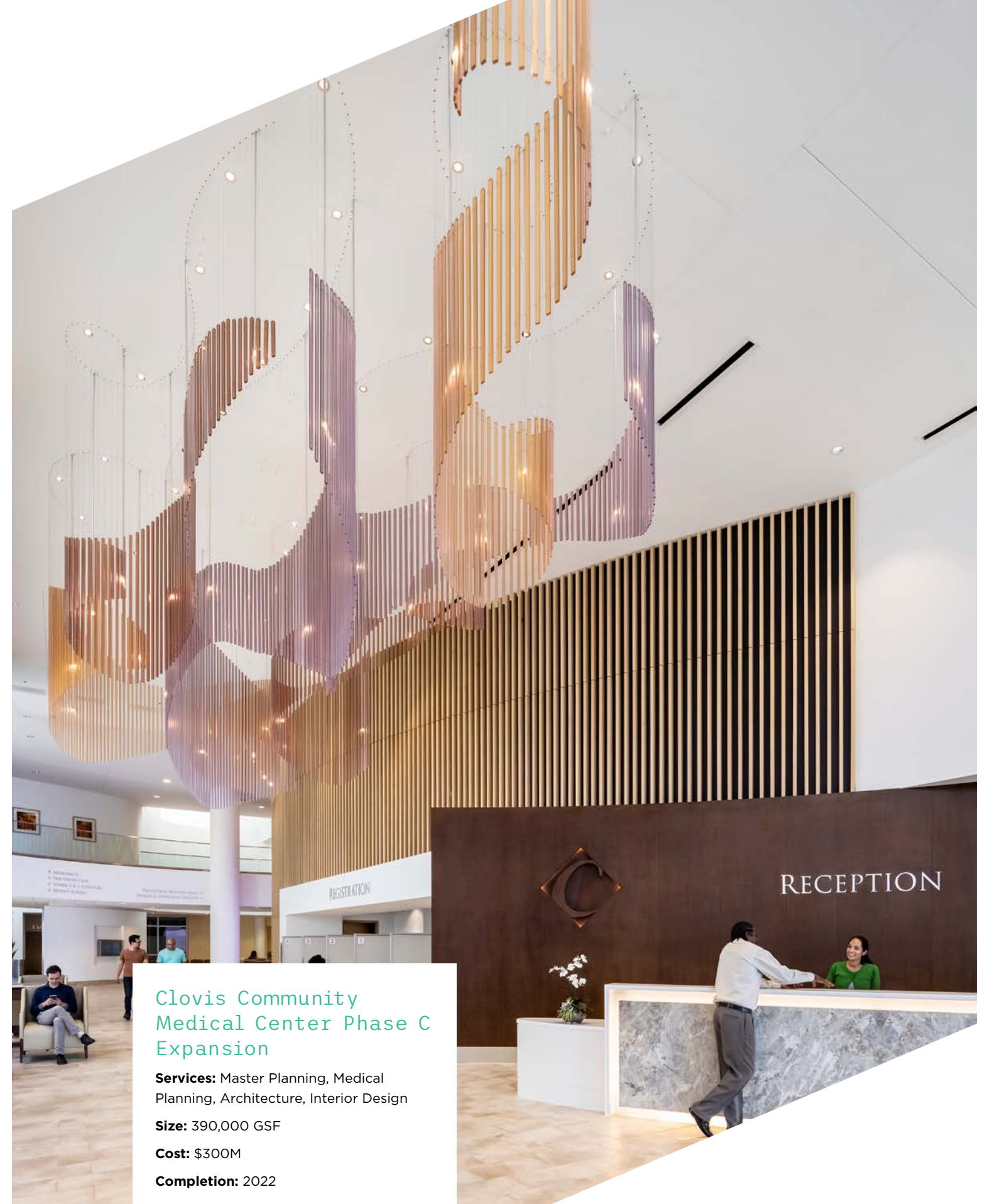
Clovis Community Medical Center in Clovis, California, prides itself on providing exceptional care with comfortable accommodations. This pride is clear from the moment patients drive onto campus. The hospital feels more like a five-star resort with an upscale aesthetic, tranquil landscape, and a café named one of the best eateries in town. The city of Clovis and the surrounding community are growing rapidly. And in response, the medical center is implementing a growth plan to double its size to serve its community better.

A new five-story, 148-bed tower repeats the exterior material and fenestration of the existing five-story tower and extends the established campus aesthetic. The project includes a new emergency

department entry with a beautiful drop-off and canopy, new kitchen, and materials management. The emergency department has three pods, a fourth pod containing ten treatment bays and two resuscitation rooms, a lobby expansion, relocated ambulance entry, decontamination, and Rapid Assessment triage areas. HMC responded to the client's ESI mix and operational-flow issues with an innovative solution that triages patients by acuity in the lobby, directing them to either existing triage rooms or a new Rapid Assessment area containing six chair bays for assessment of lower acuity cases.

This will alleviate congestion in the waiting and treatment areas, reduce treatment times, and increase efficiency of emergency staff, enabling the medical center to treat more cases in less building area for a lower cost.

Clovis Phase C achieved OSHPD 1 permits within 14 months on a complex program that added to the existing hospital in four locations.



Clovis Community Medical Center Phase C Expansion

Services: Master Planning, Medical Planning, Architecture, Interior Design

Size: 390,000 GSF

Cost: \$300M

Completion: 2022



Meet Our
Expert

Kirk Rose, AIA

With more than 37 years of architecture experience, Kirk specializes in healthcare facility planning and design, along with science, education, and large public projects. For Kirk, the best part of a project is the design process and working with the team to fulfill the client's goals. He's a positive role model for the community, as well as a knowledgeable mentor to his team in the Los Angeles office.

Thought Leadership

As a solutions firm, HMC not only relies on research, we invest in it. We dive deep. By connecting intelligence and insight with creativity, we are able to advance innovation to better understand the needs of our clients and bring them the future of design. HMC Architects constantly looks to innovate and expand how we can provide exceptional solutions to our clients, here are some relevant ideas:

[Healthcare COVID-19 Research](#)

[HMC Architects Releases Cancer Care Study](#)

[What Is the Role of the Architect In Healthcare Data Security?](#)

[Hospital Architecture Design & Planning: Promoting Patient Safety](#)

[BIM Construction: The Combined Power of Drone Technology and Building Information Modeling](#)

[Create Access to Nature Through Biophilic Architecture and Design Principles](#)

[Envisioning a Sustainable Environment](#)

[Accelerating Project Schedules With Immersive Collaboration](#)

Firm Recognition

HMC consistently ranks as a top firm by many industry publications, here is a selection:

Engineering-News Record (ENR)

The Top Design Firm List, California #2

Green Projects, California #5

Architectural Record Top 300 Architecture Firms

Building Design + Construction's Giants 400 Report

#16 All Healthcare Facilities

#15 Hopsital

#11 Medical Office Building, Dental Office

#77 Outpatient Facilities

Zweig Group
Best Firms to Work For 2019



If your campus needs
architectural renovations
or new designs, contact
HMC Architects:

Kirk Rose AIA, DBIA

Healthcare Practice Leader

Kirk.Rose@hmcarchitects.com

www.hmcarchitects.com

