

2023

PRE K-12 EDUCATION PRACTICE BROCHURE

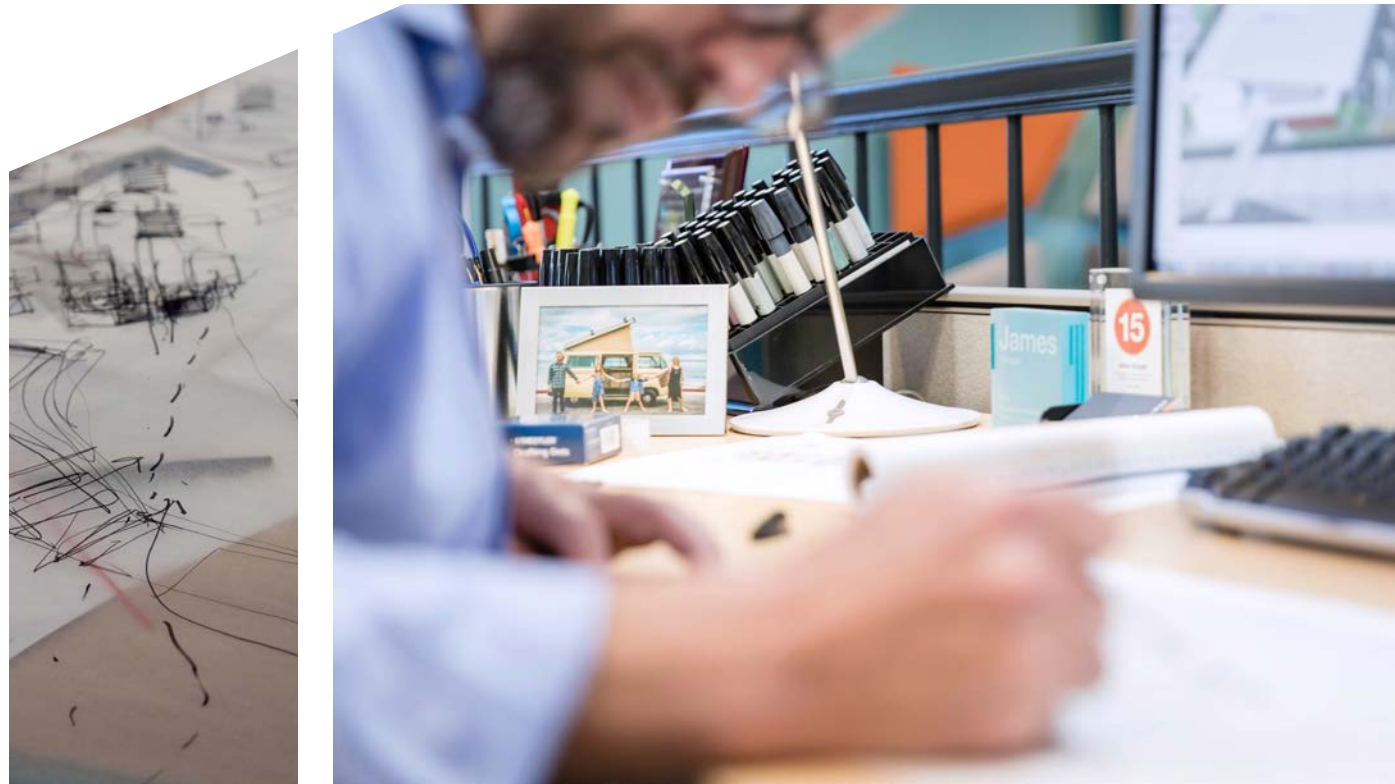


HMC Architects

design for good.

Founded with the purpose of anticipating community needs, HMC aims to create designs that have a positive impact, now and into the future.

We focus primarily on opportunities to have the most direct contribution to communities — through education, healthcare, and civic spaces.



Visionary People. Iconic Design.

We design for the human experience with an inherent desire to make a difference in our communities. We stand for tomorrow by designing buildings that positively impact the environment and benefit society, while also promoting human health and quality of life.

Designing the spaces people use every day is deeply rewarding. We strive to connect with our clients to better understand their architectural needs, providing them with sound, functional spaces that draw people into an environment where engaging with others comes naturally. Every school campus has needs. At HMC Architects, we not only want to meet those needs, but we also strive to improve the lives of all involved. By talking to students, teachers, administrators, and parents, and by putting ourselves in their shoes, we are better able to design buildings that support cooperative learning, are tailored to curriculum, and that encourage discussion and interaction campus-wide. Our job is to provide an environment that embraces discovery and inspires students and teachers alike.

WE DESIGN SCHOOLS FOR ACTIVE LEARNING AND SPIRITED TEACHING

Education is evolving. More educators are embracing a Socratic model of teaching, where students work cooperatively to pose and answer questions and solve problems. Educational architecture, therefore, must incorporate designs that enable collaboration. This focus on teamwork starts well before the design phase. The most diligent architects of today's Pre-K-12 facilities begin by collaborating with the school communities they serve.

Design doesn't live in a vacuum—it requires collaboration. We listen—because your insights craft the design. It's your input that makes your space right for you, so we stick to your master plan and design according to your goals. It's this collaboration that allows us to create amazing spaces that lead to delighted clients and thriving communities. At HMC, we believe that the most successful firms will find new ways to meet their clients' need for faster delivery of design services. If you believe our design innovations can help the students in your district, contact HMC Architects. We'd be delighted to hear about your district's unique learning culture, architectural needs, and campus goals. Together we can collaborate to create a stunning design that helps your school and your students succeed. **To learn more about our immersive design process, contact HMC Architects today. Our design experts are available to answer any questions you might have.**

83

Years of Design
Excellence

315

Design
Professionals

#2

ENR
CALIFORNIA
2022

Architecture

Services

Architecture
Environmental Graphics
Interiors
Master Planning
Education Planning
Programming
Sustainable Design
Sustainable Strategy
Visualization

Collaboration is in our DNA.

Design at HMC is born from a **big idea**, guided by **clarity**, measured by **context**, and **inspires** those it serves.

At HMC Architects, we're breaking down the walls between our clients and design teams by including them in an immersive process that not only cuts weeks and months off project schedules, but also creates an undeniable synergy where they are designing their projects with us.

We cannot design for the human experience if we cannot be human. To serve every human individually and entirely, we need people that reflect the diversity of our communities. By leveraging that diversity, we create the conditions for an engaged, agile, and resilient workplace. The result is bigger ideas, bolder designs, and a better world. How can we create a truly collaborative experience that accelerates project schedules and engages clients, user groups, and the community in a way that they become active participants in our design process?

We strongly believe in collaborating with our clients and stakeholders from the start, because doing so not only provides the best solutions to their problems, but also produces opportunities previously unrecognized. To that end, our approach includes an intensive, multi-day design process where both the owner and user groups can see the project develop in real-time, right before their eyes.

HMC's design process requires commitment and coordination from our clients in order for us to meet and collaborate with several stakeholders in a condensed time-frame. It requires both parties to be "all in" and focused on the project the entire time. But the effort offers a unique collaborative experience that not only saves time and cost, but also creates an invaluable bonding experience among the team.





82

LEED
Projects



11

LEED
Platinum

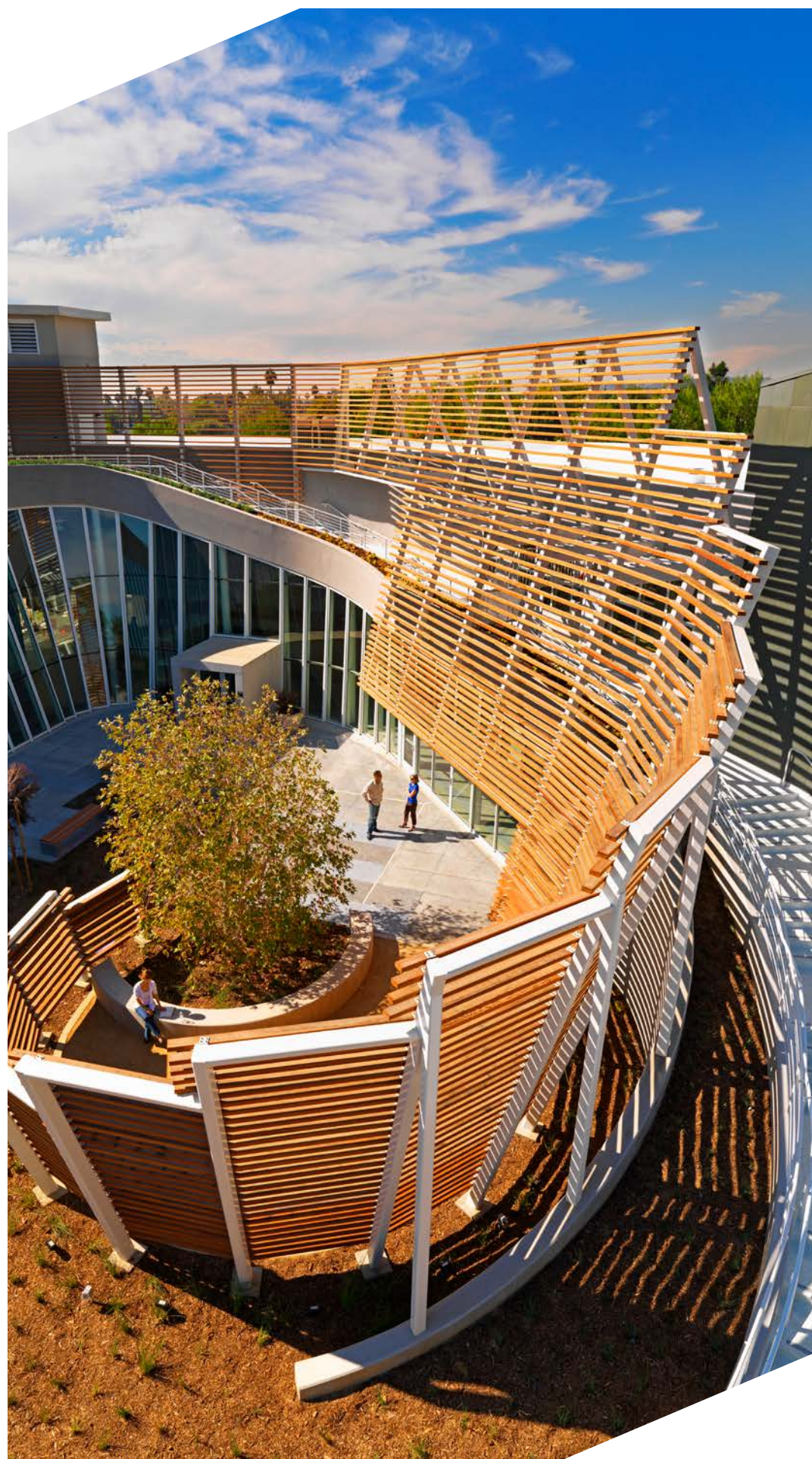
32

LEED Accredited
Professionals



#21

Top
Design Firms



A Culture of Positive Impact

HMC believes that buildings should positively impact the environment and benefit society while also promoting human health and quality of life.

Achieving this goal requires a new set of skills, tools, and beliefs. It requires a transformation in how we think about buildings, how we design them, and how we ultimately use them. Sustainable strategies in architecture challenge us to design buildings that are not just sustainable, but also aim to restore, renew, and revitalize the environment. We know that we can do more than sustain a future—we can build one that flourishes.

Achieving a building design that reaches beyond sustainability requires collaboration from the start. When you partner with HMC Architects, we'll design a strategy based on where your facility is on the green spectrum and where you want it to be—whether that is achieving an outstanding LEED rating, securing ZNE, or transcending sustainability and reaching for sustainable design. We'll collaborate closely with you every step of the way and listen to the insights offered by the people who use your building every day.

By working together to design with an emphasis on energy conservation, water resilience, and carbon footprint reduction, we help you meet your sustainable architecture objectives in cost-effective ways.

We collaborate with our clients from day one of a project. We lead workshops for clients and their consultants on biophilic design, sustainable strategies, and all of the ways in which we design for the human experience from cradle to grave. We review biophilic design strategies and how they can help meet specific client goals. For example, when a school district wants to increase learning opportunities and productivity, we explain how access to and views of the outdoors can motivate students to feel their best and do their best work.

To make impactful contributions that transcend our roles as architects, we take an open approach to design, combining economic, environmental, and regulatory insights to get a high-level view of society's needs. We also look to the younger members within our firm and in the communities we serve for guidance, as they are especially aware of and driven to help solve deep social and environmental problems. HMC employees are all given space in which to pursue their ethical and professional goals, because when you hire people who share your vision, they get to do what they love while supporting your organization's goals.

While sustainable design attempts to meet the needs of the present without compromising the needs of future generations, sustainable principles seek to replenish and restore natural resources.

Big Ideas. Bolder Designs. A Better World.

In 2009, we founded the HMC Designing Futures Foundation (DFF) a private grant-making foundation that helps deepen our social and environmental impact. The DFF seeks to build a better world by investing in architecture and design, a sustainable and sustainable future, and education programs that train the next generation of innovators.

HMC's immersive process is born of a big idea. We are innovators, constantly seeking out new and improved processes and tools to provide inspiring design. At HMC, we have focused on building resources in-house that move the needle on all aspects of design, delivery, and planning.

DIGITAL PRACTICE

Design Technology implements coding, algorithms, data, and computation to add value throughout the project life-cycle. Connecting geometry, data, analytics, and people—throughout the process—to deliver our best architecture. Our firm has years of experience working with the latest technology. We can help you find the best possible design, materials, and construction workflow to make your dream building a reality.

MEDIALAB

HMC's graphic design team integrates storytelling and identity to our work. Whether through stand-alone commissions or collaborating with a larger team, bring a deeper level of craft and meaning to custom graphic moments that address identity, wayfinding, place-making, and donor recognition, enriching user experience and providing a unique storytelling ability for our clients. By creating authentic, branded interior environments that are inseparable from the architecture, we help organizations celebrate their culture and tell powerful stories.

A FOCUS ON DELIVERY

Lean is not just a set of tools and processes; it is a culture, or a way of thinking and operating. Many companies set out on a lean transformation journey in an effort to streamline individual processes and, in turn, link them together in the most efficient way. Continuous learning and improvement is a cornerstone of a lean culture. There is always a way to make it better, faster, less expensive, or more efficient without sacrificing effectiveness, quality, value, or satisfaction.

Design-build is about trust between all partners. It requires shared responsibility and clear communication to be successful. At HMC Architects, we make sure all of the design-build projects we are involved in include design features that not only meet our clients' needs but also surpass their expectations.





Architecture That Helps Teachers Teach and Students Learn

Designing Educational Architecture for Pre-K-12 Schools Through Collaboration

Our architecture can provide your school with the features it needs to meet your educational methods and goals, and your budget. Our designs often incorporate inter-classroom, shared common areas that are open and include movable furniture and walls. Does your school focus on performing arts? We can create a design that incorporates dance, music, or theater rehearsal and recital areas. Does your curriculum focus on STEM?

We can equip your school with the facilities it needs to teach tomorrow's scientists and engineers. Learning happens everywhere on a campus, so a good design must encourage and promote outdoor activities, too. We design outdoor learning environments that offer students a variety of learning zones that meet their needs. From shaded plazas with tables for socializing to quiet areas for studying, we create spaces students can call their own. Through our designs, we address many other concerns, too, including sustainability and school security. No matter your school's challenges, we can provide the ideal architectural solution.



DESIGNS THAT HELP STUDENTS ACHIEVE



MODERNIZATION

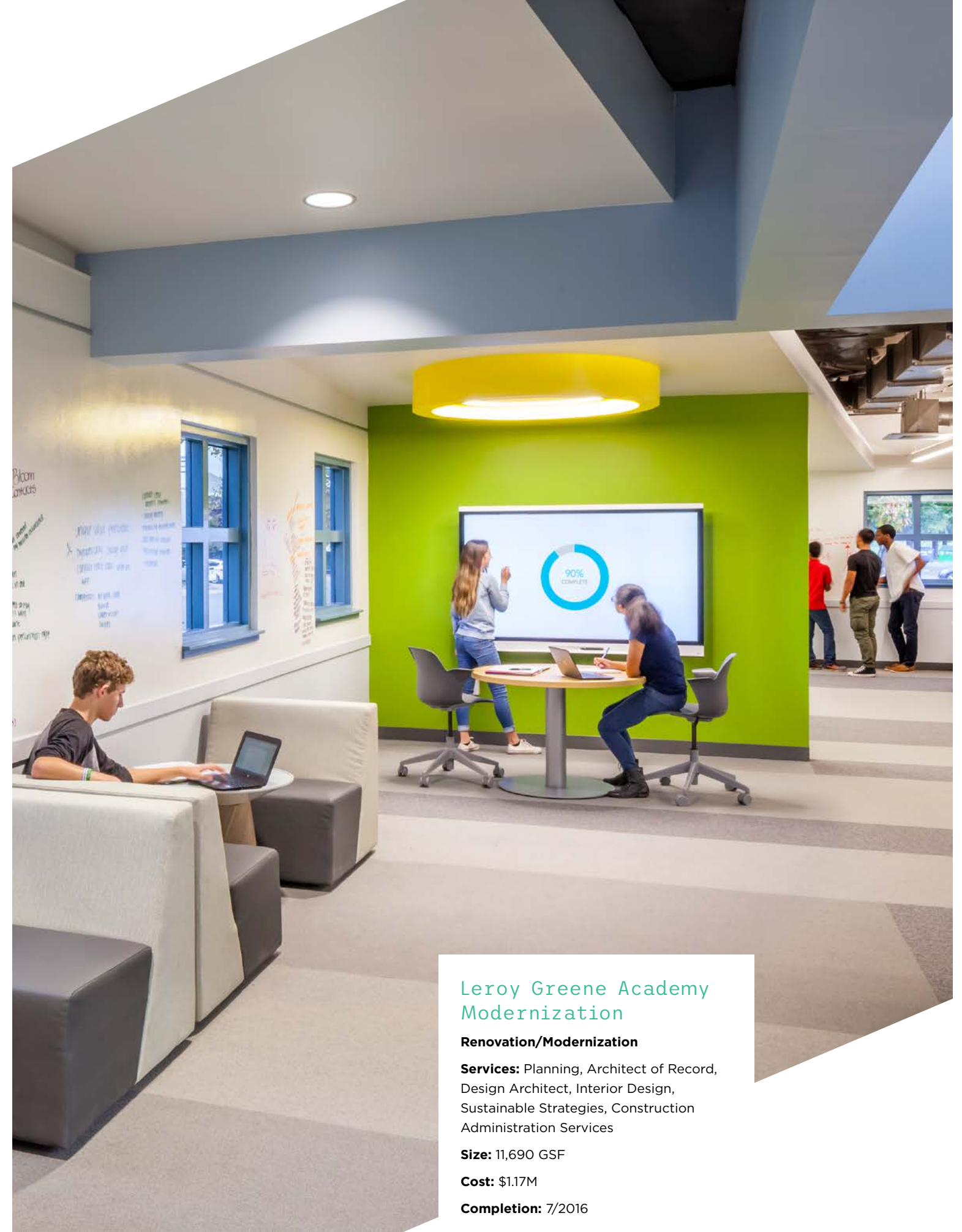
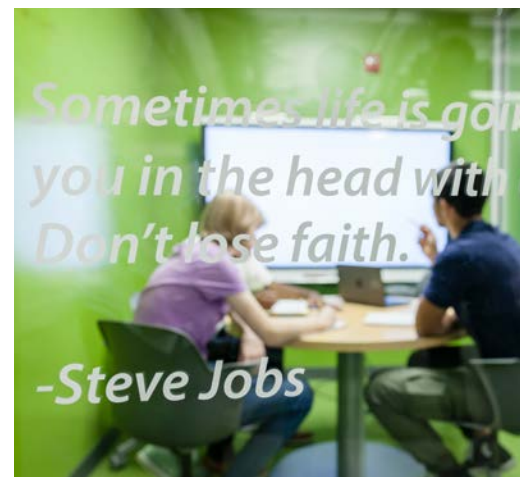
School Goes Start-up

Creating something from nothing. Building and developing business ideas. Working together. These are the actions that define entrepreneurs.

At Leroy Greene Academy, middle and high school students can develop these skills in the center for innovation and super lab, part of a newly modernized wing on campus that smartly merges today's start-up company vibe with project-based learning.

Natomas Unified School District wanted to modernize the science wing and adjacent library at Leroy Greene Academy to create an innovation hub that would promote an entrepreneurial spirit and reinforce their

business-minded curriculum. Our design solutions take inspiration from present-day workplace designs with varying collaboration areas, an energizing color palette, flexible furniture, and technology infused throughout. Small, medium, and large collaboration spaces accommodate student teams working on group projects, with a glass enclosed “think tank” in the middle that feels more like a conference room than a study space. Virtually every surface is writable, whether it’s a glass or painted wall. And prolific entrepreneurs are featured throughout the space. In the adjacent science wing, we modernized all the science labs and designed a “super lab.” Empowering and encouraging students to build large-scale projects, the “super lab” is a mighty maker-space complete with tools and access to the outdoors via a roll-up garage door.



Leroy Greene Academy Modernization

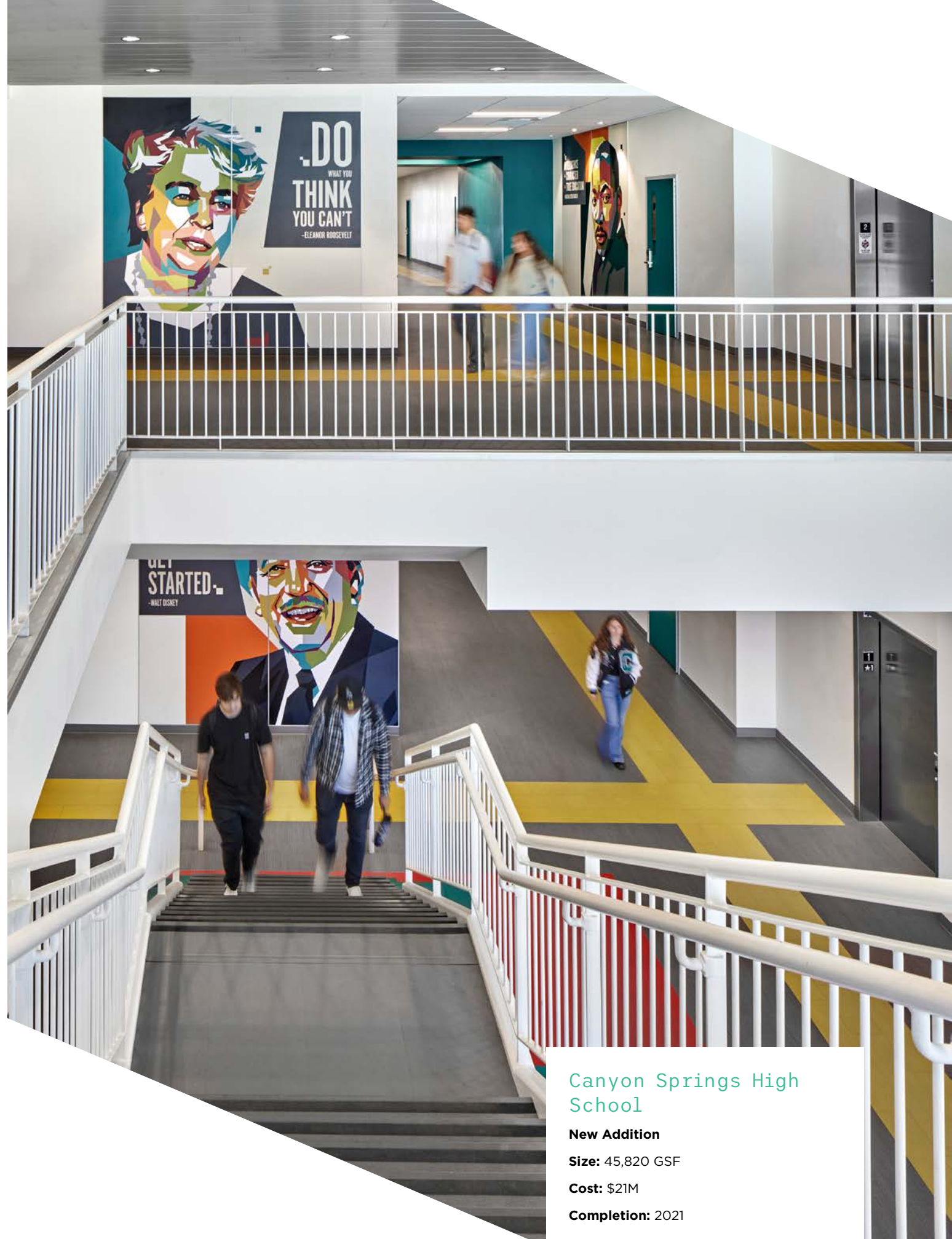
Renovation/Modernization

Services: Planning, Architect of Record, Design Architect, Interior Design, Sustainable Strategies, Construction Administration Services

Size: 11,690 GSF

Cost: \$1.17M

Completion: 7/2016



Canyon Springs High School

New Addition

Size: 45,820 GSF

Cost: \$21M

Completion: 2021

The Future is High-Tech

As a part of the collaborative vision of the Riverside County Office of Education, Moreno Valley Unified School District, and Canyon Springs High School, the team developed the **CTE Cyber Innovation Center/eSport Lab**.

The new building in Canyon Springs High School replaces 24 portables and includes eight cutting-edge science labs, four science work rooms, and 16 standard classrooms. Our design complimented the District's twenty-first-century curriculum and vision for innovation with 360-degree flexible classrooms that eliminate the standard front-of-classroom. The learning spaces support the teacher and student in an engaged and dynamic teaching method that takes learning beyond the confines of the traditional classroom.

One of the major features of this project is the CTE Cyber Services Innovation Center/ E-Sport Lab. Based on the anticipated increased demand for Information and Communication Technology and STEM Careers over the next 20 years, the Riverside County Office of Education, Moreno Valley Unified School District, Canyon Springs High School, and the design team worked together to create the lab of the future. The eSport Lab features a state-of-the-art tech interior to promote the popular, fast-growing program to augment the Cyber Innovation program allowing students to explore STEM concepts, learn strategic thinking and organization, and develop better social skills. The first course was written with input from academic and industry partners; District received statewide UC a-g approval with their first submission. The new Cyber Innovation - eSports Hub features a Tron-like ceiling, sound system, and coved lighting.





ENGAGING ENVIRONMENTS

New Life for an Old School

Mismatched buildings. Dilapidated classrooms. An unfit multipurpose room. These were just some of the challenges students and faculty at Lexington Elementary School faced.

Then, after a contentious quest by parents to provide a new school for its students, the project was delayed several years by seismic concerns that pushed the school's budget to the brink.

To keep costs in check and speed construction after the long delay, HMC's design team combined customized, prefabricated administration, classroom and library/media center buildings with a site-built multipurpose building—supporting the community's desire for a multi-functional civic hub. The multipurpose building has a dominant cedar exterior, while other buildings blend in with cedar accents that echo its mountain setting.

The design reconfigured the parking and drop-off areas for increased safety and a clearly identifiable and secure main entry. Using the buildings to create an enclosed courtyard, the classrooms and playground space opens up to views of the beautifully forested hills. With windows on two sides, every classroom is drenched in daylight with a stunning view of the landscape. Roofs of the multipurpose and administration buildings extend to create welcoming porches that open onto the courtyard. Large operable glass walls on the multipurpose building open to the courtyard to enhance the indoor/outdoor connection during the school day, and expand the facility for hosting community events. Complete with energy efficient features, the new two-story buildings are designed to support a common core-oriented, International Baccalaureate curriculum that fosters creativity, collaboration, communication, and critical thinking.



Lexington Elementary School

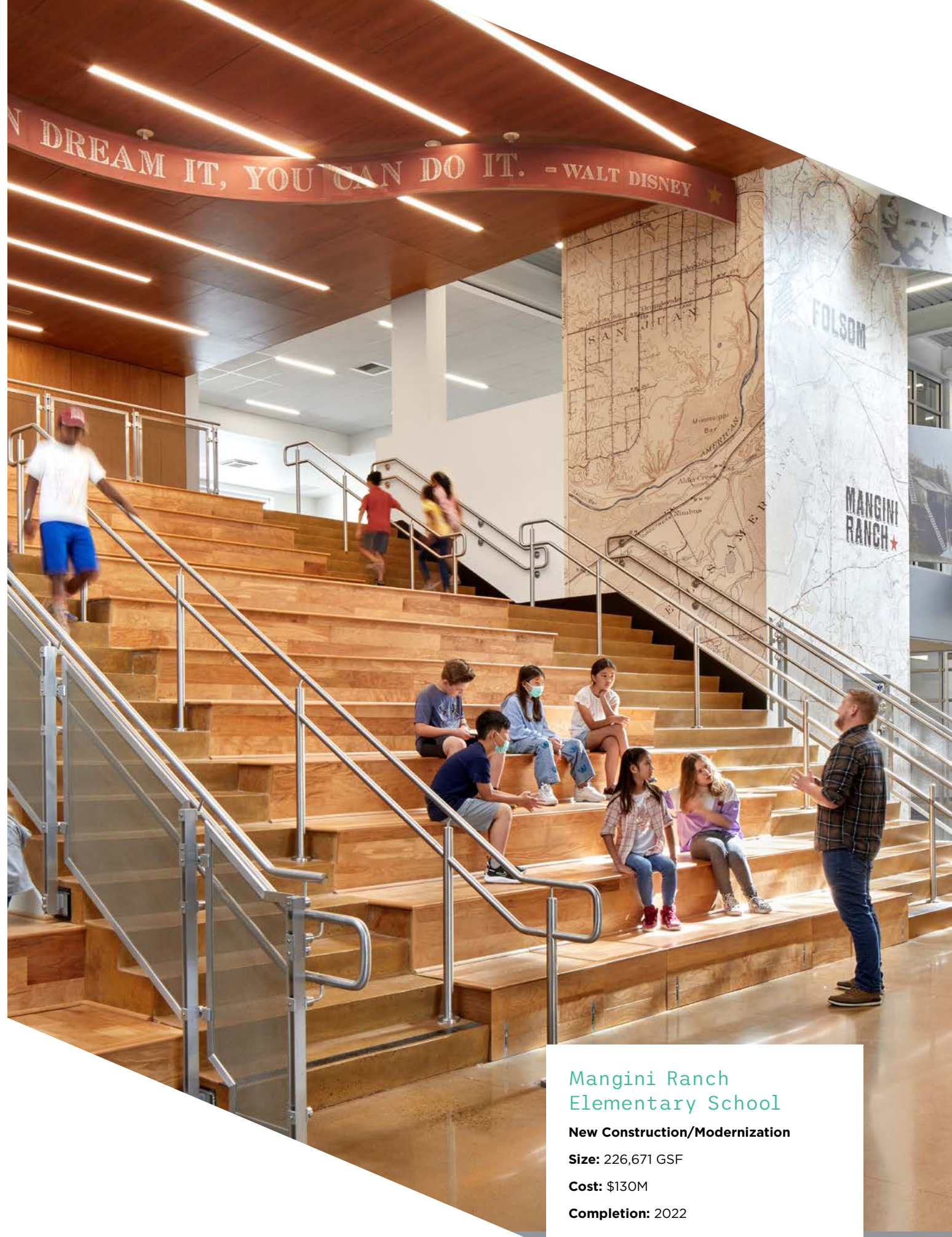
New Construction/Modernization

Services: Architect of Record, Design Architect, Interior Design, Sustainable Strategies

Size: 30,623 GSF

Cost: \$16.9M

Completion: 8/2014



Mangini Ranch Elementary School

New Construction/Modernization

Size: 226,671 GSF

Cost: \$130M

Completion: 2022

Understand Today by Learning About Yesterday

The school pays tribute to Folsom's past with large wall graphics spanning the entry lobby and classroom wings, connecting local historic images of early pioneers, the Transcontinental Railroad, the Gold Rush, the Pony Express, ranching, and agriculture to day-to-day student learning.

Mangini Ranch is the first elementary school built to serve the new Folsom Ranch community. And this new two-story, single-building elementary school is designed to meet the evolving needs

of students now and into the future. The school design promotes active collaboration and various instructional methods.

There are 25 classrooms across six grade levels, with curriculum themes for each level. Mobile furnishings and operable partitions provide a high degree of flexibility. Classrooms are connected by collaboration spaces, including smaller, break-out spaces that accommodate project-based activities and small group instruction. Learning spaces extend beyond the interior to the outside. The centerpiece of the new school is the gathering staircase, a hub for daily student life, and an area for group gatherings.



SYNCHRONOUS AND ASYNCHRONOUS LEARNING



CLASSROOM



Beacon of the Community

After 14 years of setbacks and budget restrictions, Twelve Bridges High School has finally become a reality.

The comprehensive high school for 1,200 students utilizes an environmentally sensitive and cost-effective design to deliver an innovative solution to a unique site and community.

The design team utilizes the site's natural topography and adjacent nature preserve as driving design elements. The campus nests into a hillside and splits open to allow the nearby grasslands to spill into the campus. And every classroom has a view of the protected riparian habitat or a direct connection to an outdoor learning space.

The school's programs are strategically condensed into an inviting student-centric design that promotes collaboration, inclusivity, and contextual awareness. The school houses learning pathways in arts, technology, science, and special education.

Each concentration area has dedicated spaces explicitly designed for their unique requirements. These include art studios with outdoor access, a performing arts center that cascades down the natural topography, and science classrooms adjacent to the open space preserve and offer hands-on biology and environmental studies opportunities with the fiber of the natural landscape woven into the context of the campus.

Condensing several programs into one student union building creates a more cost-effective and energy-efficient building, promotes a community-focused student body, and provides opportunities for collaboration and campus culture. The new Twelve Bridges High School is a beacon of community pride. The whole story is one of perseverance and resilience, spanning twenty years.

Twelve Bridges High School

New Construction
Services: Full architectural services
Size: 126,650 SF
Cost: \$84.0 M
Completion: 2021





Meet Our
Expert

Brian Meyers, LEED AP
As HMC's PreK-12 Practice Leader, Brian is responsible for the strategic planning, direction, and management of the firm's PreK-12 practice. He has more than 20 years of experience spanning all aspects of educational planning and design. He has earned an amazing reputation among clients and teammates for his project management style which encourages consensus building and seeks to ensure successful project delivery within tight time and budget restrictions.

Thought Leadership

As a solutions firm, HMC not only relies on research, we invest in it. We dive deep. By connecting intelligence and insight with creativity, we are able to advance innovation to better understand the needs of our clients and bring them the future of design. HMC Architects constantly looks to innovate and expand how we can provide exceptional solutions to our clients. Here are some relevant ideas:

[PreK-12 Education COVID-19 Research](#)

[Campus Reboot Guide](#)

[Electronic Remote Backchecks: Strategies for a Successful DSA Backcheck in a COVID-19 World](#)

[Revolutionizing School Design with Virtual Reality](#)

[Rethinking Classroom Design to Promote Collaboration](#)

[Create Access to Nature Through Biophilic Architecture and Design Principles](#)

[Envisioning a Sustainable Environment](#)

Read More Here: [School News](#)

Or Use the QR Code Here:



Firm Recognition

HMC consistently ranks as a top firm by many industry publications, here is a selection:

Engineering-News Record (ENR)

The Top Design Firm List, California #17

Green Projects, California #5

Architectural Record Top 300 Architecture Firms

Building Design + Construction's Giants 400 Report

9 Pk-12, Public, Private, Charter, Military

Top 10 K-12 School Sector Architecture Firms

Top 20 Green Building Design Firms

Top 25 University Architecture Firms

Top 15 Healthcare Architecture Firms

Top 100 Government Sector Architecture Firms

Zweig Group

Best Firms to Work For 2019

If your campus
needs architectural
renovations or new
designs, contact HMC
Architects:

Brian Meyers

Prek-12 Practice Leader

brian.meyers@hmcarchitects.com

www.hmcarchitects.com

